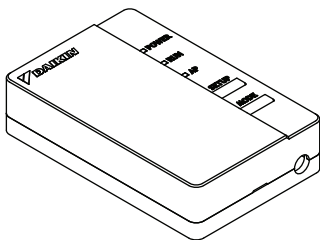




4P359542-1H

Wireless LAN Connecting Adapter  
<BRP069A41>

# Installation Manual





Homepage: <http://www.onlinecontroller.daikineurope.com>



- ◆ For details on specifications, setting methods, FAQ, copy of the original declaration of conformity and the latest version of this manual, see the above homepage.

- ◆ Hereby, Daikin Industries Czech Republic s.r.o., declares that the BRP069A41 is in compliance with the essential requirements and other relevant provisions of directive 1999/5/EC.

## Accessories

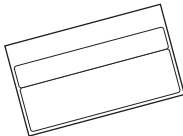
Check if the following accessories are included in your package.

Model BRP069A41 ※1 Affix to the seal attachment on the back face of this sheet and store in a safe place.

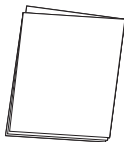
(A) Wireless LAN  
connecting adapter



(B) Serial number seal  
(1 sheet) ※1



(C) Installation manual  
(1pc)



# Safety precautions

- ◆ The following describes the meanings of pictorial symbols used in this documentation.

Give this installation manual to the customer when installation is completed.

- ◆ To conduct a test run of the air conditioner, follow the installation manual for the air conditioner unit.



The protection of appliances marked with this symbol is ensured by double insulation and does not require a safety connection to electrical earth (ground).



Prohibited



Follow directions



## Warning

Situations which could result in death or serious injury.

### When installing:



- Request installation by your dealer or a technician.  
(Can cause electric shock or fire.)
- Always use the accessories and specified parts for installation. Be sure to follow the directions in this installation manual.  
(Can cause the unit to fall, electric shock or fire.)
- Electrical work should be carried out in accordance with the installation manual and the national electrical wiring rules or code of practice.
- Always turn off the power supply when installing.  
(Touching the electrical parts can cause an electric shock.)  
The main switch of the installation is at the outdoor unit.  
Please switch off this main switch to turn off the power supply.

# Safety precautions



## Warning

Situations which could result in death or serious injury.

### When using:



- Do not disassemble, modify, or repair.  
(Can cause fire, electric shock or injury.)
- Do not handle this product with wet hands.  
(Can cause electric shock or fire.)
- Do not allow this product to get wet or use it when bathing or doing similar activities with water.  
(Can cause electric shock or fire.)
- Do not use this product near medical equipment or persons using cardiac pacemakers or defibrillators. This product may cause life-threatening electromagnetic interference.
- Do not use this product near auto-control equipment such as automatic doors or fire alarm equipment.  
(Can cause accidents due to erroneous equipment behavior.)



- 
- Immediately disconnect the air conditioner power plug if there is abnormal odor or sound, when it is overheating, or smoking.  
(Can cause fire or malfunction.)
    - ◆ Request an inspection by your dealer.
  - Disconnect the air conditioner power plug if the product was dropped or the case is damaged.  
(Can cause fire or electric shock)
    - ◆ Request an inspection by your dealer.

# Safety precautions



## Caution

Situations which could result in damage or physical injury.

### When installing:



- Do not install where flammable gas leaks can occur.  
(Can cause fire.)



- Grip the connector when disconnecting the connecting cord.  
(Otherwise fire or electric shock can occur.)

### When using:



- Do not use where small children can get access.  
(Can cause injuries.)

- Do not use this product near a microwave oven.  
(This can affect Wireless LAN communications.)

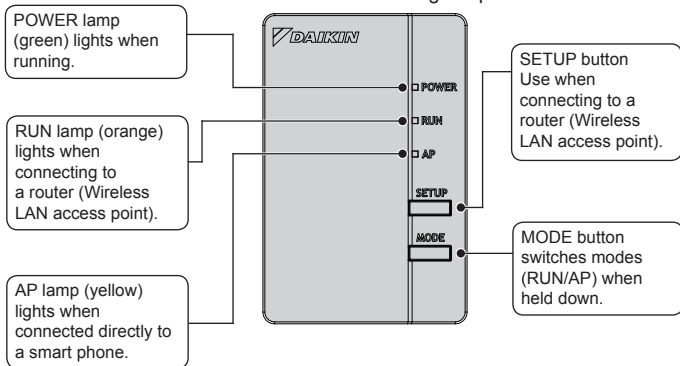
# Disposal requirements



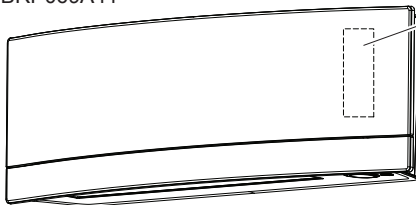
- Your product is marked with this symbol. This symbol means that electrical and electronic products shall not be mixed with unsorted household waste.
- Do not try to dismantle the system yourself: the dismantling of the product and of other parts must be done by a qualified installer in accordance with relevant local and national legislation.
- Product and waste must be treated at a specialized treatment facility for re-use, recycling and recovery.
- By ensuring correct disposal, you will help to prevent potential negative consequences for the environment and human health. Please contact the installer or local authority for more information.

# Main components

Wireless LAN connecting adapter



BRP069A41



Wireless LAN connection adapter (the product is inside the indoor unit)



# Installation

## Installation Work

### 1 Attach the Wireless LAN connection adapter to indoor unit.



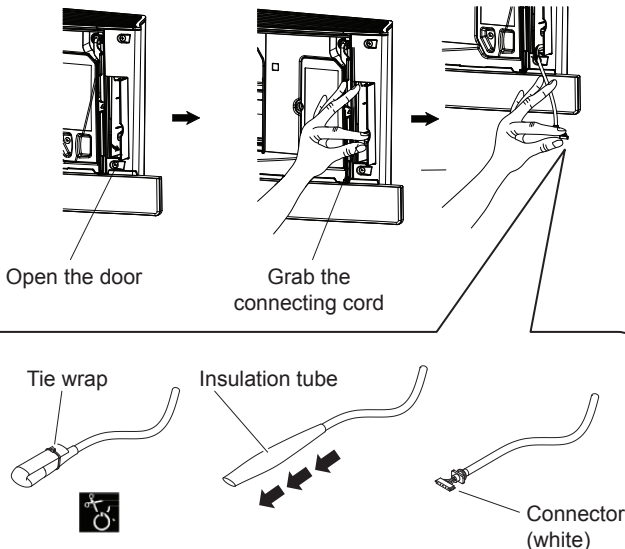
#### Danger

Always turn off the power supply when installing.  
(Touching the electrical parts can cause an electric shock.) The main switch of the installation is at the outdoor unit.

#### ■ BRP069A41

Remove the upper front panel from the indoor unit and open the door, grab the connecting cord with your fingers and pull it out, then remove the tie-wrap and pull the insulation tube off the connecting cord.

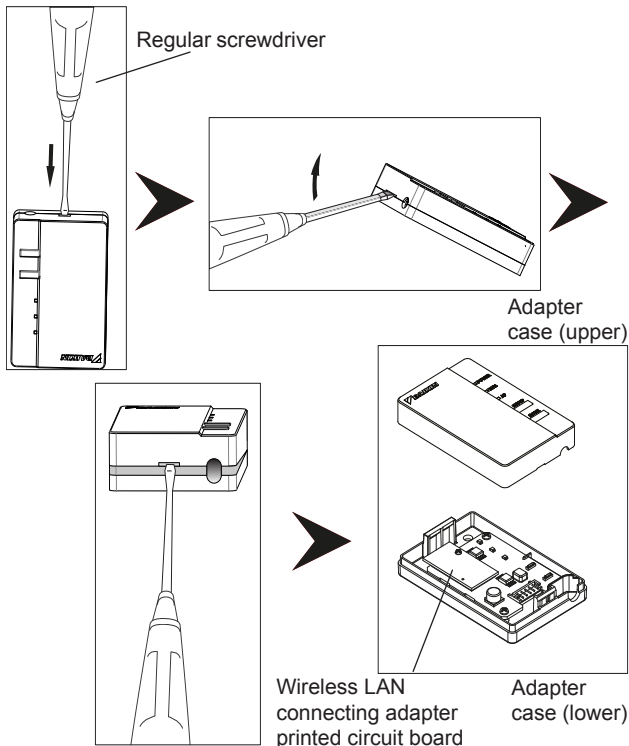
- ◆ Refer to your air conditioner's installation manual for details on removing the upper front panel.



### 2 Remove the adapter case (upper).

#### ■ BRP069A41

Press a regular screwdriver into the dent between the upper and lower cases to remove. (Be careful not to damage the case.)

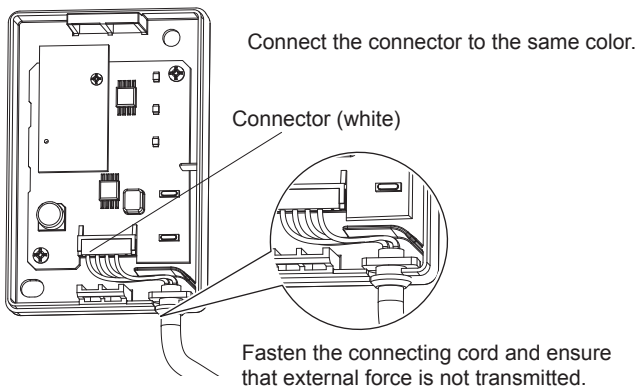


### 3 Attach connecting cord to the product.

#### ■ BRP069A41

Attach the connecting cord connector (white).

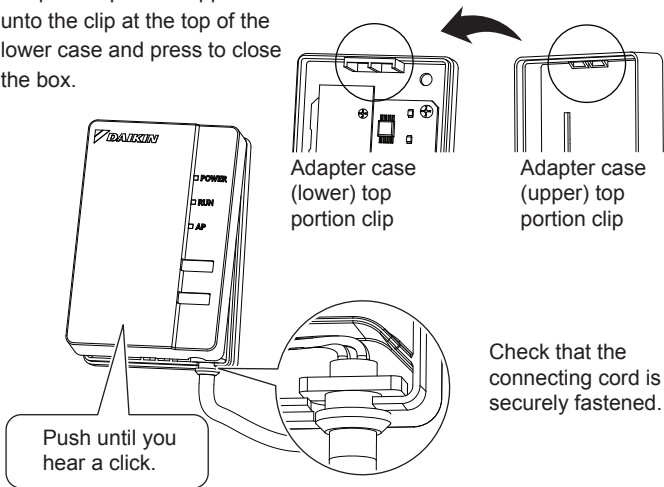
- ◆ Fasten the connecting cord to the notch in the adapter case (lower).



### 4 Return the adapter case to its original state.

#### ■ BRP069A41

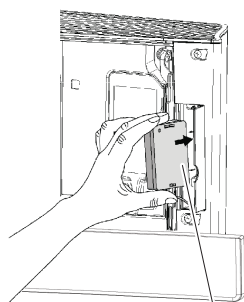
Snap the top of the upper case onto the clip at the top of the lower case and press to close the box.



### 5 Inserting Wireless LAN connection adapter to indoor unit.

#### ■ BRP069A41

Grab the adapter case with your fingers, insert it back into the indoor unit and close the door. (See picture on the next page)



Adapter case



Close



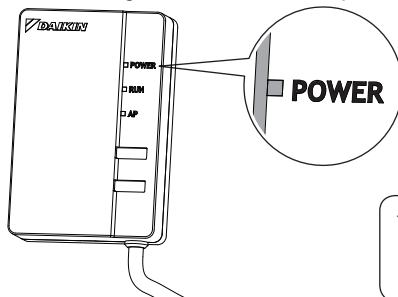
### CAUTION

Close this door before operating the unit. When turning the power supply to the unit panels will open. If the door is not closed, panel will hit the door and damage can occur.

## 6 Functionality Check

### ■ BRP069A41

Turn on the power supply, wait until the initialization is completed (the lower panel is in the CLOSED position). Open the door, remove the WLAN adapter and check that the [POWER] lamp for the product lights. After checking, return the WLAN adapter into the unit and close the door.



- ◆ When turning on the power, always attach the adapter case (top).

The customer is responsible for providing the following.

- Smartphone or tablet PC  
(Supported OS: Android 2.3.3 or later; iOS 5.0 or later.)
- Internet line and communicating device  
(Modem/router or similar device)
- Wireless LAN access point
- [Daikin online controller] (No cost)

Installation method of Daikin online controller

For Android Phones

- (1) Open the [Google Play].
- (2) Search for [Daikin online controller].
- (3) Follow the directions on the screen to install.

For iPhones

- (1) Open the [App Store].
- (2) Search for [Daikin online controller].
- (3) Follow the directions on the screen to install.

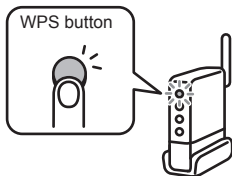
Refer to

<http://www.onlinecontroller.daikineurope.com>  
for detailed installation instructions.

# Configuration

- 1 Hold down the [WPS] button on the router (Wireless LAN access point).

- ◆ See the accessory operations manual for the router (Wireless LAN access point) for details.



- 2 Hold down the [SETUP] button on the product for approximately two seconds.

- ◆ The [RUN] lamp on the product blinks more quickly. When the WLAN adapter and the router (Wireless LAN access point) are connected, this lamp lights.

- 3 Connect the smartphone (or tablet PC) and the router (Wireless LAN access point).

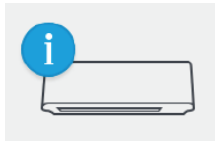
- ◆ See the accessory operations manual for the router (Wireless LAN access point) for details.

- 4 Tap the [Online controller] that was installed.

- ◆ Follow the directions on the screen to make the settings and for operation.

## [Note]

- If an upgrade is available for your adapter, the notification icon "i" will be displayed on the devices overview screen. Tap it to upgrade your firmware.



- If you are connecting multiple systems, you can change the system name in the "More" system menu.

# Configuration

Connection  
Settings  
Section

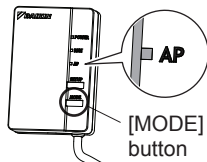
## The SSID and KEY

The [SSID] and [KEY] listed on the (B) serial number seal in the accessory parts are necessary when connecting the air conditioner and the smart phone using Wireless LAN.

Affix the (B) serial number seal for the accessory parts here, and store in a safe place.

**Setting Details** If connections cannot be done simply using [WPS], connect using the following method.

- 1 Hold down the [MODE] button on the product for approximately two seconds, then wait for up to 10 seconds until the [AP] lamp lights.



- 2 Directly connect the smartphone (tablet PC) and adapter to the Wireless LAN without going through the router (Wireless LAN access point).
  - ◆ Select SSID (DaikinAP \*\*\*\*\*) listed on the "Wi-Fi" (B) serial number seal using the smartphone settings, or the Wireless LAN connecting adapter, and enter the KEY.
- 3 Tap [Online controller] that was installed.

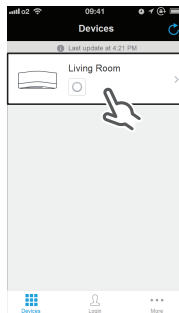
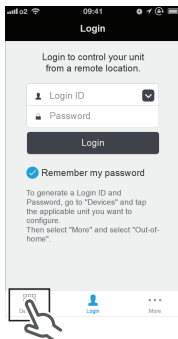


# Configuration

Connection  
Settings  
Section

## 4 Make the wireless connection settings.

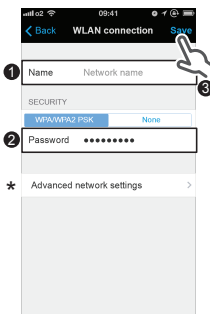
(1) On the Login screen, (2) On the Devices screen, (3) On the Living Room screen, tap on [Devices].



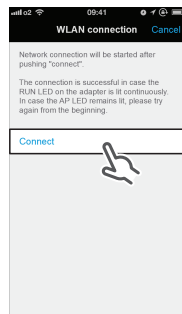
(4) On the Settings screen, tap on [WLAN Connection].



(5) On WLAN connection screen, fill in Network name and Password, then tap on [Save].



(6) On the WLAN connection screen, tap on [Connect] and follow the instructions on the smartphone.

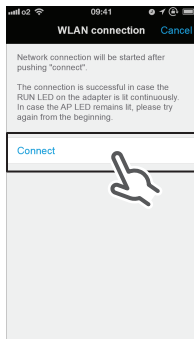
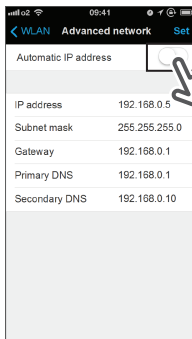


# Configuration

## Connection Settings Section

(7) After implementing the setting above and the product and router (Wireless LAN access point) are connected, the [RUN] lamp will light. If this blinks for one minute or longer, check the power to the router (Wireless LAN access point), network name and the password and again from the first procedure.

- \* For manual WLAN connection setting, tap on [Advanced network setting], turn off Automatic IP address, fill in the required information of your wifi router, then tap on [Set] and then tap on [Connect] and follow the instructions on the smartphone. Then continue as in step (7).



## 5 Connect the smartphone (or tablet PC) and the router (Wireless LAN access point).

- ◆ See the accessory operations manual for the router (Wireless LAN access point) for details.

See the operations manual posted on our homepage for details.

# Troubleshooting

The following table provides brief descriptions of how to handle trouble or uncertainties when you install the product or make connection settings. Refer to the FAQ on the homepage for more details.

When this happens	Explanation and where to check
None of the lamps light.	<ul style="list-style-type: none"><li>→ Check the installation.</li></ul> The product is behaving incorrectly. <ul style="list-style-type: none"><li>→ Turn off the air conditioner power and restart it.</li></ul>
The system (air conditioner) is not listed on the system list screen.	<ul style="list-style-type: none"><li>→ Check that the power is on.</li><li>→ Check that the RUN/AP lamp is lit.</li><li>→ Retry to connect the adapter to the wireless network.</li><li>→ Move the router (wireless LAN access point) closer to the product</li><li>→ It is possible that you are using a smartphone, access point or wireless router that is not supported.</li><li>→ Make sure that the smartphone or tablet is connected to the same wireless LAN network as the WLAN adapter.</li></ul> See the homepage for details.
When trying to make a direct connection to the adapter ([AP] mode), the adapter is not visible in the available Wi-Fi networks list of the phone/tablet.	When in [AP] mode, go back to [RUN] mode and return to [AP] mode by pressing the [MODE] button for about 2 seconds, this to switch to another Wi-Fi channel. Repeat if necessary.

**DAIKIN INDUSTRIES CZECH REPUBLIC s.r.o.**

U Nové Hospody 1/1155, 301 00 Plzeň Skvrňany, Czech Republic

**DAIKIN EUROPE N.V.**

Zandvoordestraat 300, B-8400 Oostende, Belgium

**CE 1383**

**4P359542-1H 2014.07**