

CHAPTER 5. DISASSEMBLING PROCEDURE

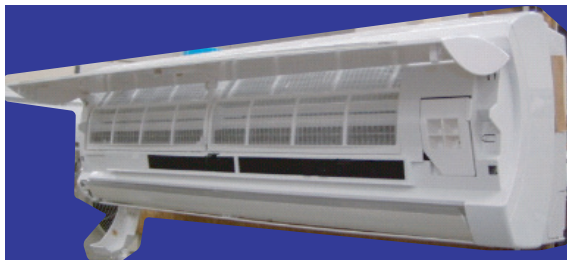
Be sure to disconnect the power cord from the AC power outlet before starting the disassembly procedure. When reassembling the unit after repairing, be sure to install screws to their original positions.

The screws used are not the same in specifications such as corrosion-resistant treatment, tip shape and length.

After the air conditioner is repaired or parts are replaced, measure insulation resistance of the equipment using an insulation resistance meter. If the measured resistance is lower than 1 MW, inspect parts and repair or replace defective parts.

[1] INDOOR UNIT

- 1) Open the front panel.



- 2) Remove the cord clamp retaining screw (1).



- 3) Remove the cord clamp.



- 4) Disconnect the VA wires.



- 5) Open the horizontal louver cover.



- 6) Remove the horizontal louvers.(2 pieces)

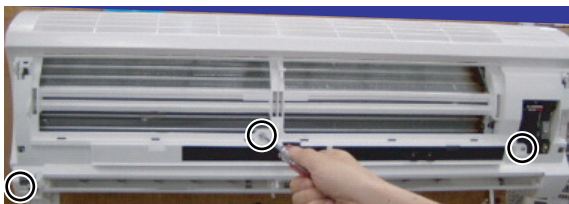


ESD09HRA

7) Remove the air filters.



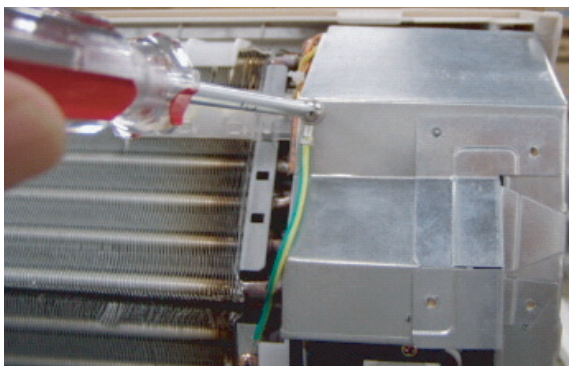
8) Remove the front panel retaining screws (3).



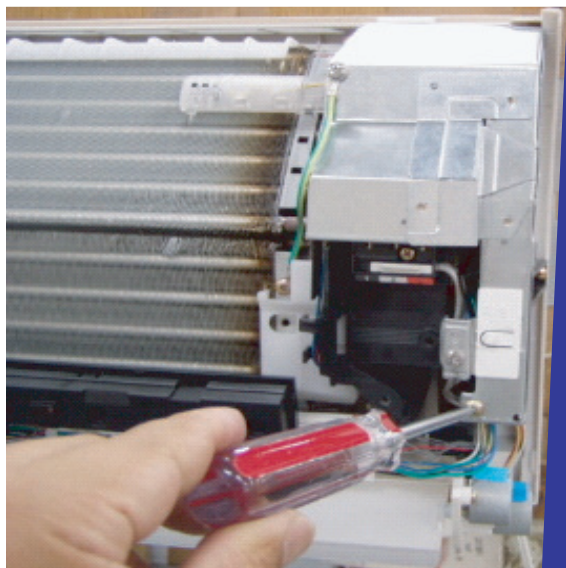
9) Disengage the hook on the back side (indicated with "O" in the diagram below), and dismount the front panel.



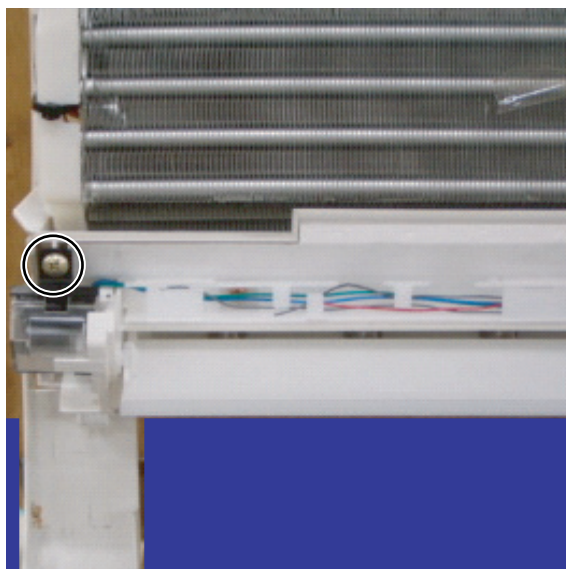
10) Remove the ground wiring fixed screw (1).



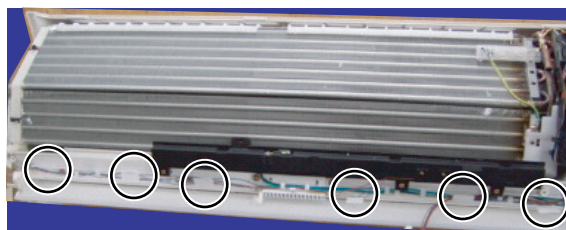
11) Remove the control box cover retaining screw (1), and remove the control box.



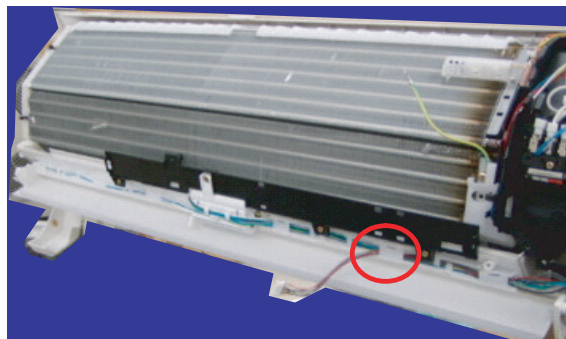
12) Remove the light receiving unit retaining screw (1).



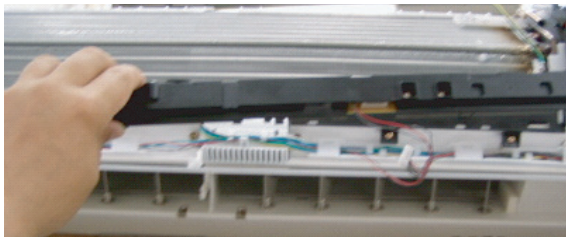
13) Open the 6 tabs on the lead wire guide.



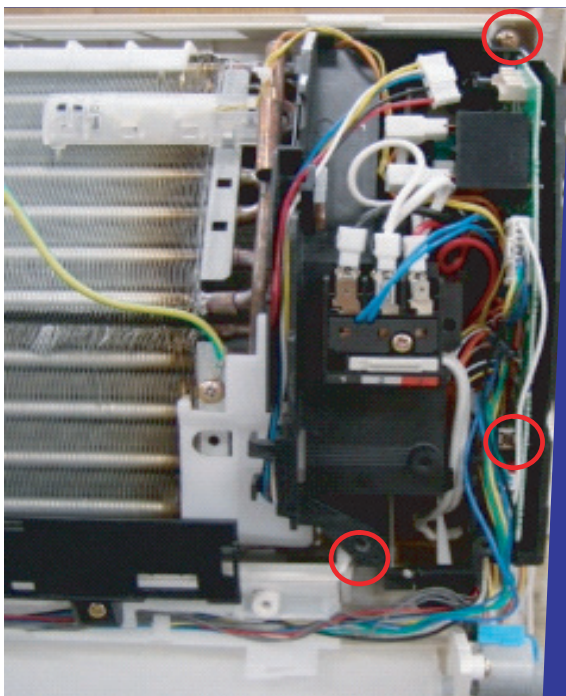
14) Disconnect the Display PWB connector.



15) Remove the Display PWB.

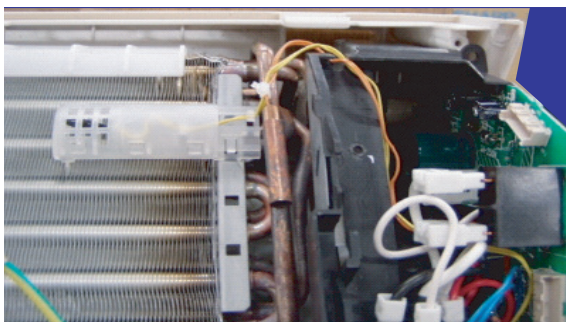


16) Remove the control box retaining screw.

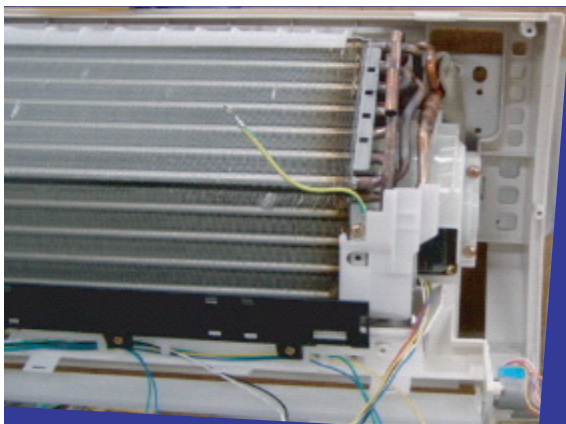


17) Disconnect the connectors ([fan motor / cluster / louver motor] x 2, rimit switch).

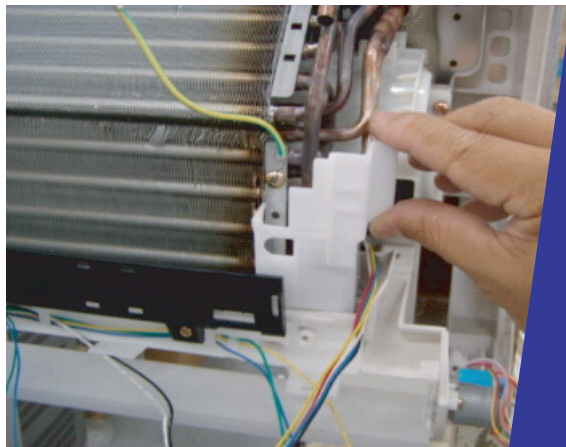
18) Remove the thermistor.



19) Remove the control box .



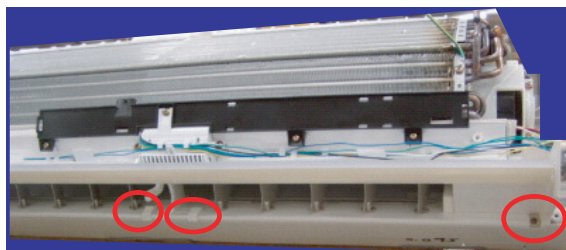
20) Remove the dew cover.



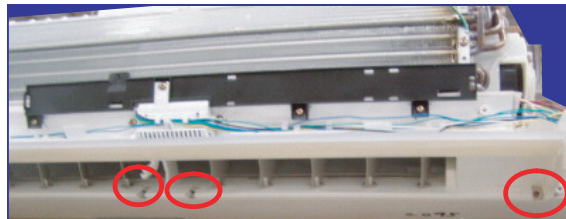
21) Remove the side panel L and drain pan retaining screws (3).



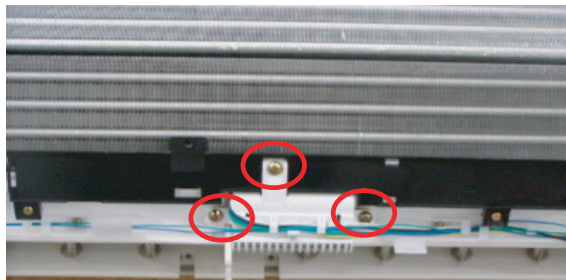
22) Remove the screw cover of the drain pan.



23) Remove the drain pan retaining screws (3).

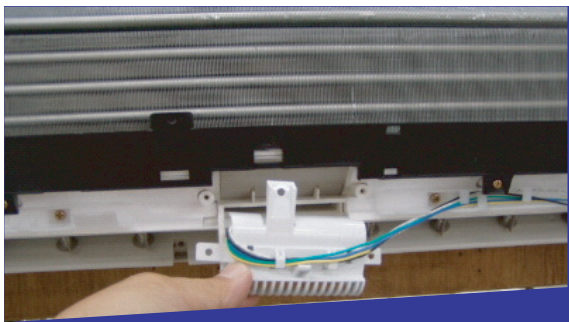


24) Remove the cluster holder retaining screws (3).

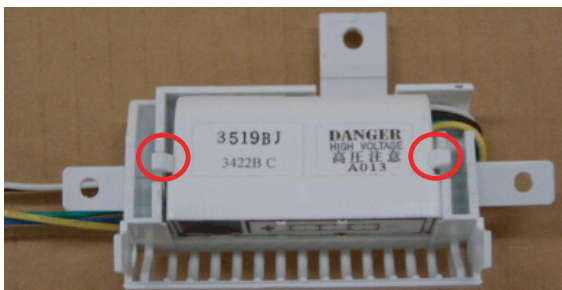


ESD09HRA

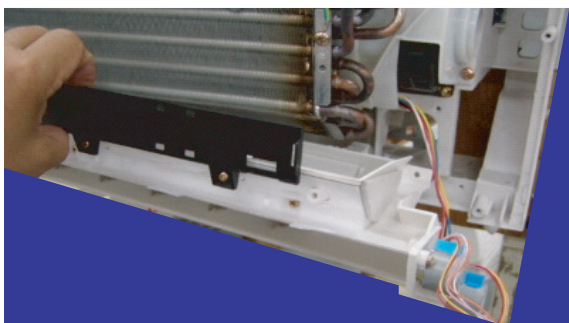
25) Remove the cluster holder.



26) Dismount the cluster (2 tabs).



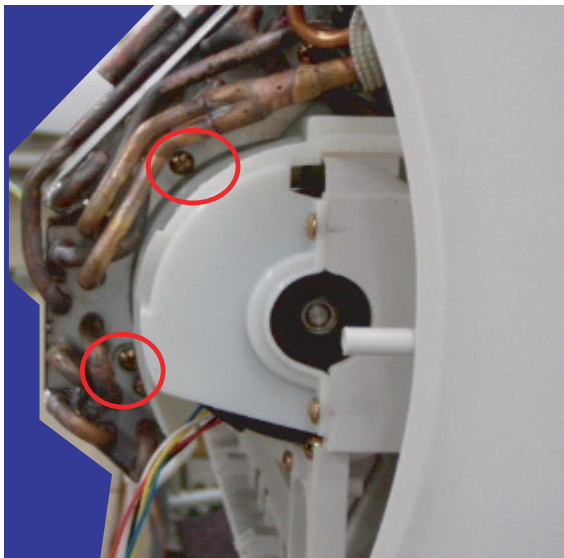
27) Dismount the drain pan.



28) Then, disengage the left side.

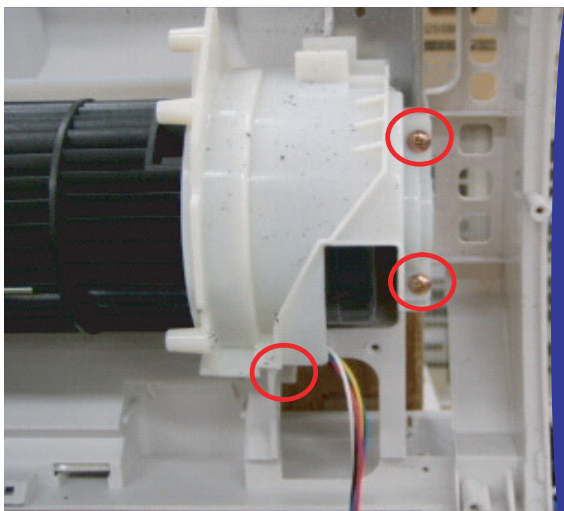


29) Remove the heat exchanger retaining screws (2).



30) Disengage the heat exchanger.

31) Remove the motor cover retaining screws (3).



32) Disengage the horizontal louver cover (hinge). Move the cover to the position shown in the diagram, then pull it to detach.

