



FILE NO.

## NOTICE

- ☒ CORRECTION      ☐ PRODUCTION CHANGE  
☐ SERVICE FLASH      ☐ ADD INFORMATION

PLEASE ADD THIS NOTICE TO THE MANUALS LISTED BELOW.

CATEGORY	: AIR CONDITIONER	DATE	: July.2006
MODEL	: SAP-CRV91EH	REF.No.	: PL 705218
DESTINATION	: Europe	ISSUE No.	: 2

THE REASON OF CHANGE.

A: Misprint	B: Quality Reliability	C: Standardization
D: Design Change	E: Addition of Missing Parts	F: Parts Compatibility

Page & Section	Key No.		Part No.	Description	Q'ty	Reference Part No.	Interchange-ability	Re-marks
Page 4	69	New	623 152 8917	Solenoid Valve Ass'y	1	852-0-4509-13500	———	E
							———	
							———	
							———	

(1) Solenoid Valve Ass'y has been added as the new parts.(Key No.69)

# Parts List



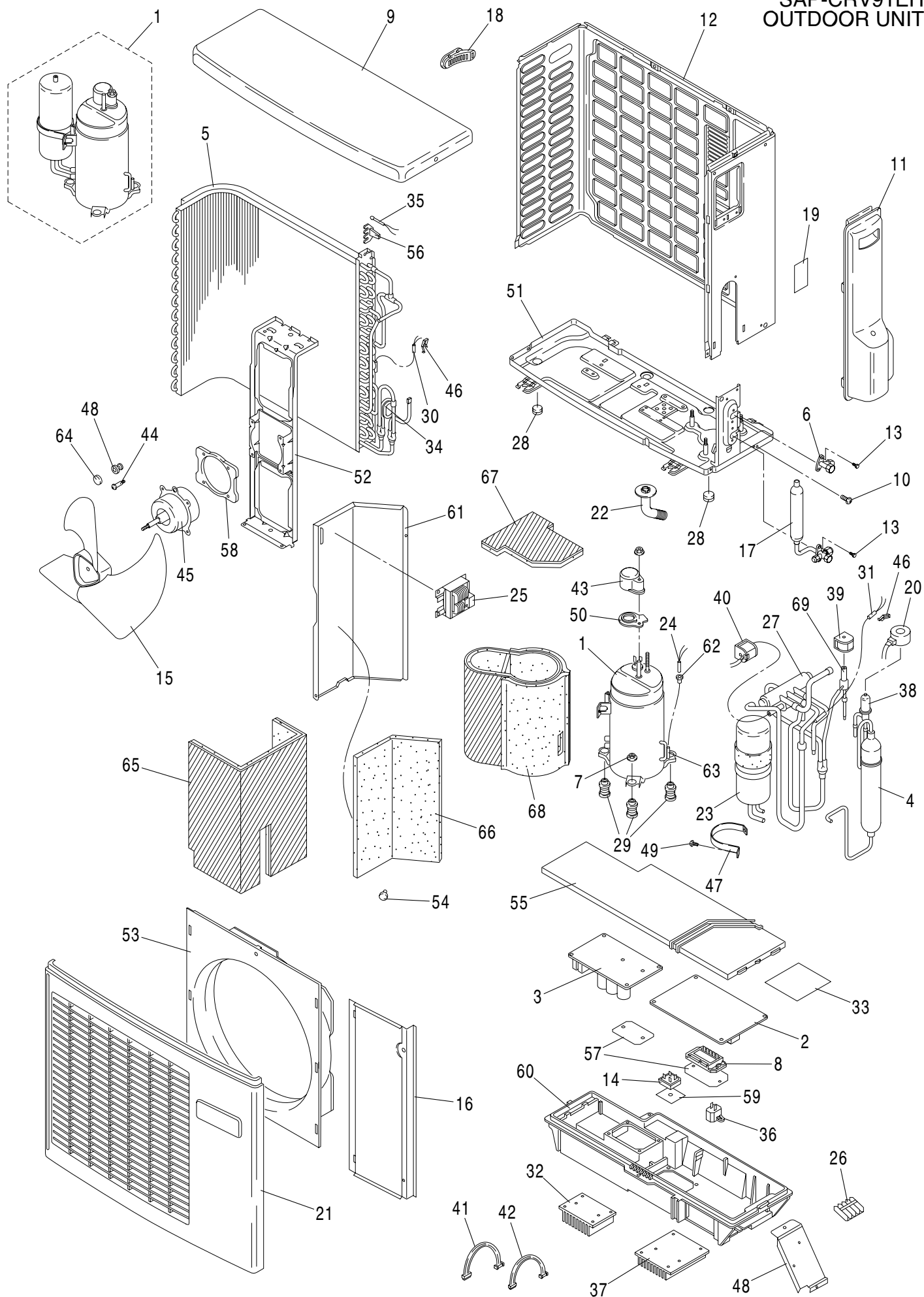
File No.

## Air Conditioner

OUTDOOR UNIT  
SAP-CRV91EH

Model No.	Prod.Code	Volt-Phase-Hertz
SAP-CRV91EH	1 852 065 79	220-230-1-50

# SAP-CRV91EH OUTDOOR UNIT



**ATTENTION !**

To ensure correct parts supply, please let us know followings,  
when you make service parts order:

1.Part No. 2.Description 3.Q'ty 4.Volts-Hz-Ph 5.Product Model No.

SAP-CRV91EH  
OUTDOOR UNIT

Key No.	Part No.	Description	Q'ty	Reference No.
* 1	623 153 3775	Compressor Ass'y	1	852-0-4516-37500
* 2	623 153 3768	Circuit Board Ass'y CB-CRV91EH	1	851-0-5181-00600
* 3	623 153 3751	P.C.B. Ass'y POW-CV121CH(B)	1	851-0-5172-85000
4	623 140 0619	Strainer Ass'y	1	852-0-4506-17900
5	623 152 5350	Condenser Ass'y	1	852-0-4102-79600
6	623 152 5367	Valve Ass'y 1/4"	1	852-0-4515-27500
7	623 029 6534	Nut Special Ass'y	3	851-0-2395-10501
8	409 439 9507	IC STK650-437B	1	QSTK650-437BN
9	623 151 9441	Top Plate	1	852-2-1103-11621
10	623 090 6907	Deltite Screw	4	3-9201-61601
11	623 151 9458	Cover Plate Ass'y	1	852-0-5302-18500
12	623 151 9465	Rear Panel	1	852-2-1120-26001
13	623 090 6907	Deltite Screw	4	3-9201-61601
14	407 195 1407	Diode DBD250G	1	DDDBD250G---N
15	623 151 9472	Propeller Fan	1	852-2-2502-14201
16	623 151 9489	Cover Plate	1	852-2-2351-19800
17	623 151 9496	Valve Ass'y 3/8 in.	1	852-0-4501-96300
18	623 131 9898	Handle	1	852-2-2303-11201
19	623 153 3799	Name Plate	1	852-2-1342-33200
20	623 147 2234	Magnetic Coil DKV-MOZS616B0	1	1FA-4-L8A0-01100
21	623 153 3782	Guard Ass'y	1	852-0-1111-17300
22	623 050 2192	Drain Pipe	1	852-2-2228-10701
23	623 146 8091	Accumulator Ass'y	1	852-0-4511-23801
* 24	623 151 9557	Thermistor DTN-TKS164B	1	1FA-4-V2E0-02800
25	623 153 3805	Solenoid R900B-TA	1	1FA-4-L5C0-02300
26	623 095 8555	Terminal Base FT-014G	1	4-2379-56229
27	623 150 2238	Solenoid Valve Ass'y VHV-0202	1	852-0-4509-13400
28	623 139 6677	Cap	2	852-2-2350-14600
29	623 051 6588	Cushion Rubber	3	852-2-2390-19900
* 30	623 151 9564	Thermistor DTN-TKS163B	1	1FA-4-V2E0-02900
* 31	623 151 9571	Thermistor KTM-35D-S1	1	1FA-4-V2E0-03000
32	623 152 0331	Cooler A6063S-T5	1	852-2-4127-15701
33	623 153 3843	Elec. Wiring Diagram	1	851-2-5253-52102
34	623 153 3836	Pipe Ass'y	1	852-0-4115-73800
* 35	623 151 9588	Thermistor KTEC-35D-S3	1	1FA-4-V2E0-03100
* 36	626 100 0063	Thermistor 912X24E400XR-A	1	4-2049-60188
37	623 151 9618	Cooler A6063S-T5	1	852-2-4127-15601
38	623 150 2146	Elec Exp Valve Ass'y SKV-16D16	1	852-0-4524-10600
39	623 153 3829	Solenoid Ass'y CRV91EH SV ASSY	1	851-0-5251-26500
40	623 153 3812	Solenoid Ass'y CRV91EH RV ASSY	1	851-0-5251-26400
41	623 153 3874	Wire Ass'y SAP-CMV1821CH	1	851-0-5280-48700
42	623 153 3867	Wire Ass'y SAP-CMV1821CH	1	851-0-5280-48800
43	626 040 1137	Cover Terminal	1	801-2-6194-14300
44	623 143 5604	Screw Special	4	852-2-2396-14601
45	623 153 3850	Fan Motor DB8-33B280H	1	541-0-0000-10800
46	623 148 5876	Mounting Thermostat SUS301-CSP	2	852-2-5303-22401
47	623 144 4125	Band Mounting	1	852-2-2356-17710
48	623 143 5635	Spacer	4	852-2-4308-11300
49	623 051 7035	Screw Special	1	852-2-2396-11001
50	626 040 1144	Gasket Terminal	1	801-2-5303-17000

NOTE: Metal and plastic parts will be supplied basically  
with necessary heat insulation pads or packing.  
Each key number with an asterisk (\*) means the  
recommended service parts.

## ATTENTION !

To ensure correct parts supply, please let us know followings,  
when you make service parts order:

1.Part No. 2.Description 3.Q'ty 4.Volts-Hz-Ph 5.Product Model No.

SAP-CRV91EH  
OUTDOOR UNIT

Key No.	Part No.	Description	Q'ty	Reference No.
51	623 151 9625	Bottom Plate Ass'y	1	852-0-2202-67501
52	623 151 9632	Mounting Plate, Fan Motor	1	852-2-2354-22520
53	623 151 9649	Nozzle	1	852-2-2311-17001
54	623 143 2009	Clip	1	852-2-5327-10600
55	623 151 9687	Cover Plate	1	852-2-5315-35701
56	623 151 5443	Mounting Thermostat	1	852-2-5303-23300
57	623 143 5581	Sheet	2	852-2-5328-33100
58	623 143 5598	Cover	1	852-2-2515-18100
59	623 055 4757	Sheet	1	852-2-5328-15400
60	623 151 9694	Elec. Component Box	1	852-2-5307-57801
61	623 151 9700	Partition Plate	1	852-2-2202-29100
62	623 054 9036	Clip, Wire	1	852-2-5304-13702
63	623 054 8664	Mounting Thermostat C1220T-0L-00	1	852-2-5303-15400
64	623 143 5628	Cap	4	852-2-2350-15000
65	623 151 9656	Insulation	1	852-2-2476-49200
66	623 151 9663	Insulation	1	852-2-2476-49300
67	623 151 9670	Insulation	1	852-2-2476-49400
68	623 123 2906	Insulation	1	852-2-2476-35300
* 69	623 152 8917	Solenoid Valve Ass'y VPV-603D	1	852-0-4509-13500

NOTE: Metal and plastic parts will be supplied basically  
with necessary heat insulation pads or packing.  
Each key number with an asterisk (\*) means the  
recommended service parts.



SANYO Electric Co.,Ltd  
Osaka, Japan  
7/06 Printed in Japan