



Datasheets

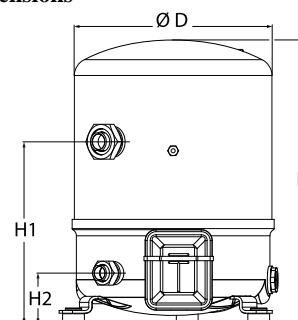
Danfoss Reciprocating compressors **MT / MTZ / MPZ / NTZ**



General Characteristics

Model number (on compressor nameplate)		MT64HM4D
Code number for Industrial pack**		MT64-4M
Drawing number		8502014e
Suction and discharge connections		Rotolock
Suction connection		1-3/4 " Rotolock
Discharge connection		1-1/4 " Rotolock
Suction connection with supplied sleeve		7/8 " ODF
Discharge connection with supplied sleeve		3/4 " ODF
Oil sight glass		None
Oil equalisation connection		None
Oil drain connection		None
LP gauge port		Schrader
IPR valve		30 bar / 8 bar
Cylinders	2	
Swept volume	107,71 cm ³ /rev	
Displacement @ Nominal speed	18.7 m ³ /h @ 2900 rpm - 22.6 m ³ /h @ 3500 rpm	
Net weight	39 kg	
Oil charge	1,8 litre, Mineral - 160P	
Maximum system test pressure Low Side / High side	25 bar(g) / 30 bar(g)	
Maximum differential test pressure	30 bar	
Maximum number of starts per hour	12	
Refrigerant charge limit	5 kg	
Approved refrigerants	R22, R417A-160PZ	

Dimensions



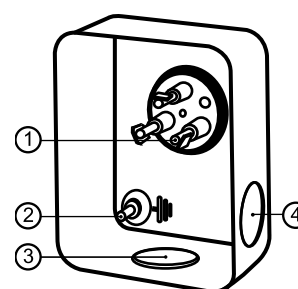
D=288 mm

H=413 mm

H1=265 mm

H2=74 mm

Terminal box



IP55 (with cable gland)

1: Spade connectors 1/4"

2: Earth M4-12

3: Knock-out Ø 21 mm (0.83")

4: Hole Ø 21 mm (0.83")

Electrical Characteristics

Nominal voltage	380-400V/3/50Hz - 460V/3/60Hz
Voltage range	340-440 V @ 50Hz - 414-506 V @ 60Hz
Winding resistance (between phases) +/- 7% at 25°C	2.39 #
Maximum Continuous Current (MCC)	14 A
Locked Rotor Amps (LRA)	64 A
Motor protection	Internal overload protector

Recommended Installation torques

Oil sight glass	0 Nm
Power connections / Earth connection	Nm / 2 Nm
Mounting bolts	15 Nm

Parts shipped with compressor

Mounting kit with grommets, bolts, nuts, sleeves and washers
Initial oil charge
Installation instructions

Approvals : CE certified, UL certified (file SA6873), -

*Singlepack: Compressor in cardboard box

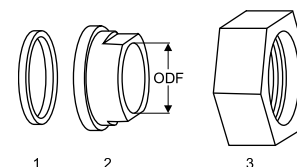
**Industrial pack: 6 Unboxed compressors on pallet (order per multiples of 6)

Rotolock accessories, suction side

Code no.

Solder sleeve, P07 (1-3/4" Rotolock, 7/8" ODF)	8153013
Angle adapter, C07 (1-3/4" Rotolock, 7/8" ODF)	8168008
Rotolock valve, V07 (1-3/4" Rotolock, 7/8" ODF)	8168032
Gasket, 1-3/4"	8156132

Gaskets, sleeves and nuts



- 1: Gasket
2: Solder sleeve
3: Rotolock nut

Rotolock accessories, discharge side

Code no.

Solder sleeve, P04 (1-1/4" Rotolock, 3/4" ODF)	8153008
Angle adapter, C04 (1-1/4" Rotolock, 3/4" ODF)	8168006
Rotolock valve, V04 (1-1/4" Rotolock, 3/4" ODF)	8168029
Gasket, 1-1/4"	8156131

Rotolock accessories, sets

Code no.

Angle adapter set, C07 (1-3/4"~7/8"), C04 (1-1/4"~3/4")	7703013
Valve set, V07 (1-3/4"~7/8"), V04 (1-1/4"~3/4")	7703006
Gasket set, 1", 1-1/4", 1-3/4", OSG gaskets black & white	8156009

Oil / lubricants

Code no.

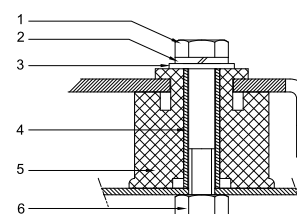
Mineral oil, 160P, 2 litre can	7754001
Mineral oil, 160P, 5 litre can	7754002

Crankcase heaters

Code no.

PTC heater 27W, CE mark, UL	120Z0459
Belt type crankcase heater, 65 W, 230 V, CE mark, UL	7773107
Belt type crankcase heater, 65 W, 400 V, CE mark, UL	7773117
Belt type crankcase heater, 65 W, 460 V, CE mark, UL	120Z0466

Mounting kit



- 1: Bolt (3x)
2: Lock washer (3x)
3: Flat washer (3x)
4: Sleeve (3x)
5: Grommet (3x)
6: Nut (3x)

Miscellaneous accessories

Code no.

Electronic soft start kit, MCI 15 C	7705006
Acoustic hood for 2 cylinder compressor	120Z0472

Spare parts

Code no.

Mounting kit for 1 and 2 cylinder compressor, including 3 grommets, 3 bolts	8156001
Service kit for terminal box 80 x 96 mm, including 1 cover, 1 clamp	8156134

Performance data at 50 Hz, EN 12900 rating conditions
R22

Cond. temp. in °C (tc)	Evaporating temperature in °C (to)								
	-25	-20	-15	-10	-5	0	5	10	15

Cooling capacity in W

30	4 151	5 704	7 573	9 791	12 392	15 408	18 872	22 819	27 280
35	3 736	5 224	7 009	9 125	11 604	14 480	17 786	21 556	25 822
40	3 324	4 741	6 435	8 442	10 794	13 524	16 666	20 252	24 316
45	2 923	4 261	5 860	7 751	9 970	12 547	15 518	18 915	22 771
50	-	3 793	5 289	7 059	9 138	11 557	14 350	17 551	21 193
55	-	-	4 731	6 374	8 306	10 560	13 170	16 169	19 590
60	-	-	-	5 701	7 481	9 564	11 985	14 776	17 970
65	-	-	-	-	6 671	8 577	10 802	13 378	16 339

Power input in W

30	2 297	2 598	2 861	3 087	3 277	3 432	3 553	3 642	3 699
35	2 356	2 704	3 012	3 282	3 516	3 713	3 875	4 004	4 100
40	2 391	2 791	3 150	3 469	3 751	3 995	4 204	4 377	4 517
45	2 397	2 852	3 267	3 641	3 976	4 272	4 532	4 755	4 944
50	-	2 882	3 357	3 790	4 183	4 537	4 852	5 131	5 374
55	-	-	3 412	3 910	4 366	4 782	5 158	5 497	5 799
60	-	-	-	3 993	4 517	5 000	5 443	5 846	6 212
65	-	-	-	-	4 630	5 185	5 699	6 172	6 606

Current consumption in A

30	5.52	5.84	6.14	6.42	6.67	6.89	7.07	7.20	7.28
35	5.60	5.95	6.30	6.62	6.91	7.16	7.38	7.55	7.67
40	5.64	6.05	6.45	6.83	7.17	7.48	7.75	7.97	8.13
45	5.63	6.12	6.59	7.03	7.45	7.82	8.16	8.44	8.67
50	-	6.12	6.68	7.21	7.71	8.17	8.58	8.95	9.25
55	-	-	6.71	7.34	7.94	8.49	9.00	9.46	9.86
60	-	-	-	7.40	8.11	8.78	9.40	9.97	10.48
65	-	-	-	-	8.22	9.01	9.76	10.45	11.08

Mass flow in kg/h

30	90	122	161	205	256	315	381	456	540
35	84	117	154	198	249	307	373	447	530
40	78	110	148	191	241	298	363	436	518
45	72	104	140	183	232	288	352	424	505
50	-	97	133	175	223	278	340	411	491
55	-	-	125	166	213	266	328	397	475
60	-	-	-	156	202	254	314	382	458
65	-	-	-	-	191	241	299	365	439

Coefficient of performance (C.O.P.)

30	1.81	2.20	2.65	3.17	3.78	4.49	5.31	6.27	7.38
35	1.59	1.93	2.33	2.78	3.30	3.90	4.59	5.38	6.30
40	1.39	1.70	2.04	2.43	2.88	3.39	3.96	4.63	5.38
45	1.22	1.49	1.79	2.13	2.51	2.94	3.42	3.98	4.61
50	-	1.32	1.58	1.86	2.18	2.55	2.96	3.42	3.94
55	-	-	1.39	1.63	1.90	2.21	2.55	2.94	3.38
60	-	-	-	1.43	1.66	1.91	2.20	2.53	2.89
65	-	-	-	-	1.44	1.65	1.90	2.17	2.47

Nominal performance at to = 5 °C, tc = 50 °C

Cooling capacity	14 350	W
Power input	4 852	W
Current consumption	8.58	A
Mass flow	340	kg/h
C.O.P.	2.96	

Pressure switch settings

Maximum HP switch setting	27.7	bar(g)
Minimum LP switch setting	0.2	bar(g)
LP pump down setting	0.9	bar(g)

Sound power data

Sound power level	0	dB(A)
With acoustic hood	0	dB(A)

to: Evaporating temperature at dew point

tc: Condensing temperature at dew point

Rating conditions : Superheat = 10 K , Subcooling = 0 K

All performance data +/- 5%

Danfoss can accept no responsibility for possible errors in catalogues, brochures and other printed material. Danfoss reserves the right to alter its products without notice.
This also applies to products already on order provided that such alternations can be made without subsequential changes being necessary in specifications already agreed.
All trademarks in this material are property of the respective companies. Danfoss, the Danfoss logotype and Maneurop are trademarks of Danfoss A/S. All rights reserved.

Performance data at 50 Hz, ARI rating conditions
R22

Cond. temp. in °C (tc)	Evaporating temperature in °C (to)								
	-25	-20	-15	-10	-5	0	5	10	15

Cooling capacity in W

30	4 408	6 052	8 029	10 372	13 118	16 299	19 951	24 107	28 802
35	3 982	5 563	7 457	9 700	12 326	15 369	18 864	22 846	27 349
40	3 557	5 067	6 872	9 006	11 506	14 404	17 735	21 535	25 838
45	3 143	4 576	6 286	8 308	10 675	13 423	16 586	20 199	24 297
50	-	4 094	5 702	7 602	9 829	12 419	15 405	18 824	22 710
55	-	-	5 130	6 902	8 984	11 409	14 214	17 433	21 100
60	-	-	-	6 219	8 149	10 405	13 023	16 036	19 482
65	-	-	-	-	7 324	9 403	11 825	14 626	17 841

Power input in W

30	2 297	2 598	2 861	3 087	3 277	3 432	3 553	3 642	3 699
35	2 356	2 704	3 012	3 282	3 516	3 713	3 875	4 004	4 100
40	2 391	2 791	3 150	3 469	3 751	3 995	4 204	4 377	4 517
45	2 397	2 852	3 267	3 641	3 976	4 272	4 532	4 755	4 944
50	-	2 882	3 357	3 790	4 183	4 537	4 852	5 131	5 374
55	-	-	3 412	3 910	4 366	4 782	5 158	5 497	5 799
60	-	-	-	3 993	4 517	5 000	5 443	5 846	6 212
65	-	-	-	-	4 630	5 185	5 699	6 172	6 606

Current consumption in A

30	5.52	5.84	6.14	6.42	6.67	6.89	7.07	7.20	7.28
35	5.60	5.95	6.30	6.62	6.91	7.16	7.38	7.55	7.67
40	5.64	6.05	6.45	6.83	7.17	7.48	7.75	7.97	8.13
45	5.63	6.12	6.59	7.03	7.45	7.82	8.16	8.44	8.67
50	-	6.12	6.68	7.21	7.71	8.17	8.58	8.95	9.25
55	-	-	6.71	7.34	7.94	8.49	9.00	9.46	9.86
60	-	-	-	7.40	8.11	8.78	9.40	9.97	10.48
65	-	-	-	-	8.22	9.01	9.76	10.45	11.08

Mass flow in kg/h

30	89	122	160	204	255	313	379	453	537
35	84	116	154	197	248	305	371	444	527
40	78	110	147	190	240	297	361	434	515
45	72	103	140	182	231	287	350	422	502
50	-	96	132	174	222	276	339	409	488
55	-	-	124	165	211	265	326	395	472
60	-	-	-	155	201	253	312	379	455
65	-	-	-	-	190	240	298	363	437

Coefficient of performance (C.O.P.)

30	1.92	2.33	2.81	3.36	4.00	4.75	5.61	6.62	7.79
35	1.69	2.06	2.48	2.96	3.51	4.14	4.87	5.71	6.67
40	1.49	1.82	2.18	2.60	3.07	3.61	4.22	4.92	5.72
45	1.31	1.60	1.92	2.28	2.69	3.14	3.66	4.25	4.91
50	-	1.42	1.70	2.01	2.35	2.74	3.17	3.67	4.23
55	-	-	1.50	1.77	2.06	2.39	2.76	3.17	3.64
60	-	-	-	1.56	1.80	2.08	2.39	2.74	3.14
65	-	-	-	-	1.58	1.81	2.08	2.37	2.70

Nominal performance at to = 7.2 °C, tc = 54.4 °C

Cooling capacity	15 731	W
Power input	5 273	W
Current consumption	9.16	A
Mass flow	357	kg/h
C.O.P.	2.98	

Pressure switch settings

Maximum HP switch setting	27.7	bar(g)
Minimum LP switch setting	0.2	bar(g)
LP pump down setting	0.9	bar(g)

Sound power data

Sound power level	0	dB(A)
With acoustic hood	0	dB(A)

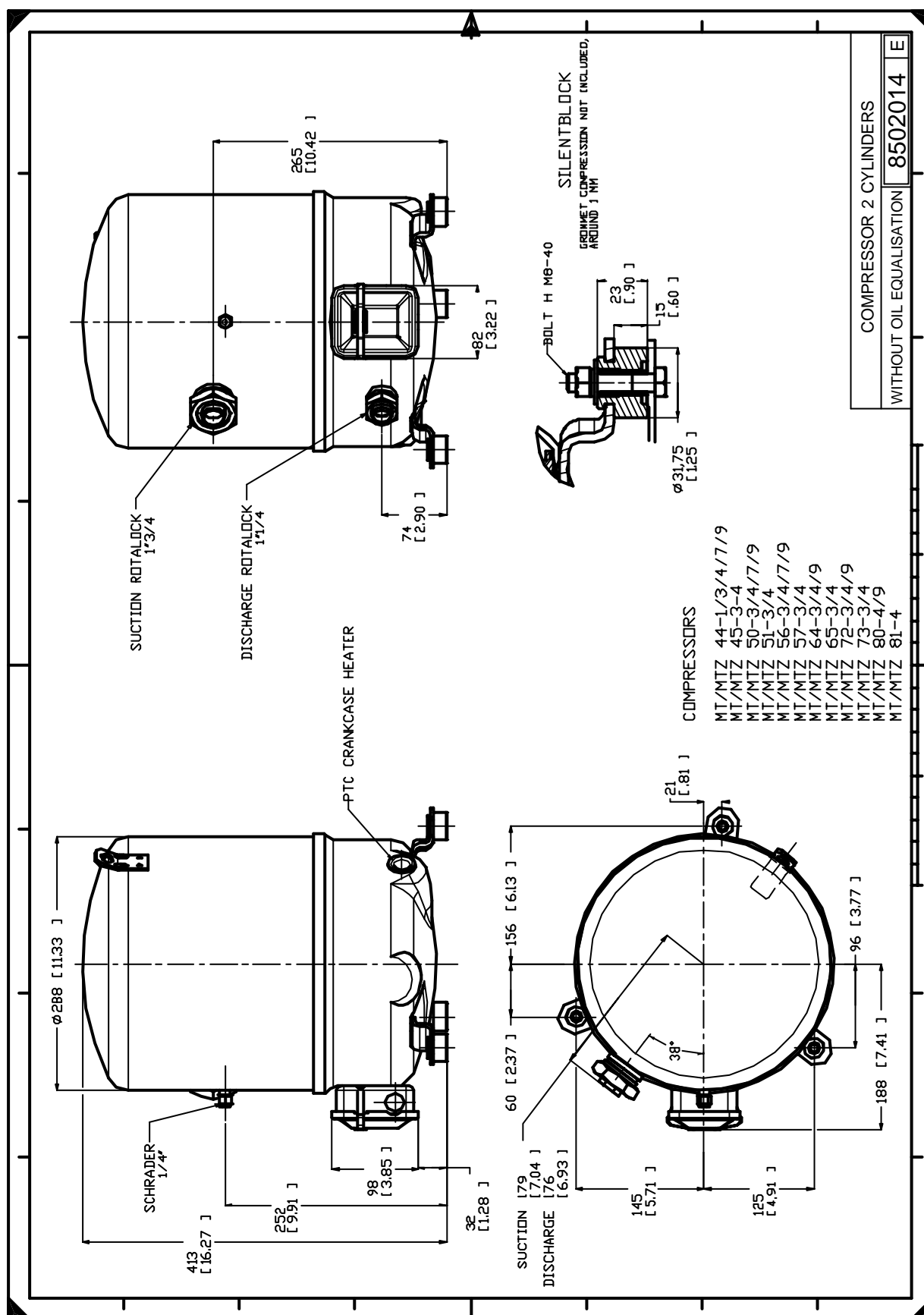
to: Evaporating temperature at dew point

tc: Condensing temperature at dew point

Rating conditions : Superheat = 11.1 K , Subcooling = 8.3 K

All performance data +/- 5%

Danfoss can accept no responsibility for possible errors in catalogues, brochures and other printed material. Danfoss reserves the right to alter its products without notice. This also applies to products already on order provided that such alternations can be made without subsequent changes being necessary in specifications already agreed. All trademarks in this material are property of the respective companies. Danfoss, the Danfoss logotype and Maneurop are trademarks of Danfoss A/S. All rights reserved.

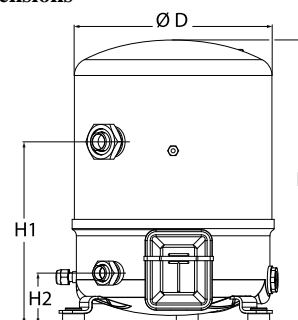


Danfoss can accept no responsibility for possible errors in catalogues, brochures and other printed material. Danfoss reserves the right to alter its products without notice. This also applies to products already on order provided that such alterations can be made without consequential changes being necessary in specifications already agreed. All trademarks in this material are property of the respective companies. Danfoss, the Danfoss logotype and Maneurop are trademarks of Danfoss A/S. All rights reserved.

General Characteristics

Model number (on compressor nameplate)		MT64HM4DVE
Code number for Singlepack*		MT64-4V1
Code number for Industrial pack**		MT64-4VM
Drawing number		8502012g
Suction and discharge connections		Rotolock
Suction connection		1-3/4 " Rotolock
Discharge connection		1-1/4 " Rotolock
Suction connection with supplied sleeve		7/8 " ODF
Discharge connection with supplied sleeve		3/4 " ODF
Oil sight glass		Threaded
Oil equalisation connection		3/8" flare SAE
Oil drain connection		None
LP gauge port		Schrader
IPR valve		30 bar / 8 bar
Cylinders	2	
Swept volume	107,71 cm ³ /rev	
Displacement @ Nominal speed	18.7 m ³ /h @ 2900 rpm - 22.6 m ³ /h @ 3500 rpm	
Net weight	39 kg	
Oil charge	1,8 litre, Mineral - 160P	
Maximum system test pressure Low Side / High side	25 bar(g) / 30 bar(g)	
Maximum differential test pressure	30 bar	
Maximum number of starts per hour	12	
Refrigerant charge limit	5 kg	
Approved refrigerants	R22, R417A-160PZ	

Dimensions



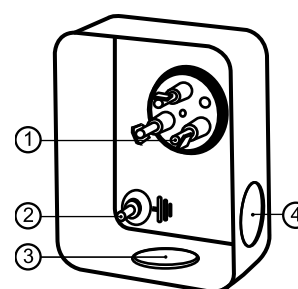
D=288 mm

H=413 mm

H1=265 mm

H2=74 mm

Terminal box



IP55 (with cable gland)

1: Spade connectors 1/4"

2: Earth M4-12

3: Knock-out Ø 21 mm (0.83")

4: Hole Ø 21 mm (0.83")

Electrical Characteristics

Nominal voltage	380-400V/3/50Hz - 460V/3/60Hz
Voltage range	340-440 V @ 50Hz - 414-506 V @ 60Hz
Winding resistance (between phases) +/- 7% at 25°C	2.39 #
Maximum Continuous Current (MCC)	14 A
Locked Rotor Amps (LRA)	64 A
Motor protection	Internal overload protector

Recommended Installation torques

Oil sight glass	50 Nm
Power connections / Earth connection	Nm / 2 Nm
Mounting bolts	15 Nm

Parts shipped with compressor

Mounting kit with grommets, bolts, nuts, sleeves and washers
Suction & Discharge solder sleeves, rotolock nuts and gaskets (shipped with rotolock version only)
Initial oil charge
Installation instructions

Approvals : CE certified, UL certified (file SA6873), CCC certified

*Singlepack: Compressor in cardboard box

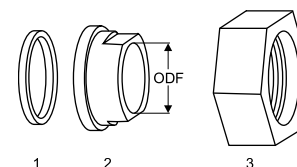
**Industrial pack: 6 Unboxed compressors on pallet (order per multiples of 6)

Rotolock accessories, suction side

Code no.

Solder sleeve, P07 (1-3/4" Rotolock, 7/8" ODF)	8153013
Angle adapter, C07 (1-3/4" Rotolock, 7/8" ODF)	8168008
Rotolock valve, V07 (1-3/4" Rotolock, 7/8" ODF)	8168032
Gasket, 1-3/4"	8156132

Gaskets, sleeves and nuts



- 1: Gasket
2: Solder sleeve
3: Rotolock nut

Rotolock accessories, discharge side

Code no.

Solder sleeve, P04 (1-1/4" Rotolock, 3/4" ODF)	8153008
Angle adapter, C04 (1-1/4" Rotolock, 3/4" ODF)	8168006
Rotolock valve, V04 (1-1/4" Rotolock, 3/4" ODF)	8168029
Gasket, 1-1/4"	8156131

Rotolock accessories, sets

Code no.

Angle adapter set, C07 (1-3/4"~7/8"), C04 (1-1/4"~3/4")	7703013
Valve set, V07 (1-3/4"~7/8"), V04 (1-1/4"~3/4")	7703006
Gasket set, 1", 1-1/4", 1-3/4", OSG gaskets black & white	8156009

Oil / lubricants

Code no.

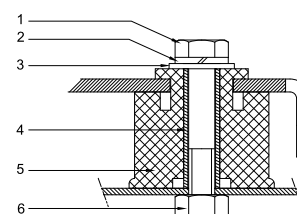
Mineral oil, 160P, 2 litre can	7754001
Mineral oil, 160P, 5 litre can	7754002

Crankcase heaters

Code no.

PTC heater 27W, CE mark, UL	120Z0459
Belt type crankcase heater, 65 W, 230 V, CE mark, UL	7773107
Belt type crankcase heater, 65 W, 400 V, CE mark, UL	7773117
Belt type crankcase heater, 65 W, 460 V, CE mark, UL	120Z0466

Mounting kit



- 1: Bolt (3x)
2: Lock washer (3x)
3: Flat washer (3x)
4: Sleeve (3x)
5: Grommet (3x)
6: Nut (3x)

Miscellaneous accessories

Code no.

Electronic soft start kit, MCI 15 C	7705006
Acoustic hood for 2 cylinder compressor	120Z0472
Oil equalisation nut	8153127

Spare parts

Code no.

Mounting kit for 1 and 2 cylinder compressor, including 3 grommets, 3 bolts	8156001
Oil sight glass with gaskets (black & white)	8156019
Gasket for oil sight glass (black chloroprene)	8156145
Service kit for terminal box 80 x 96 mm, including 1 cover, 1 clamp	8156134

Performance data at 50 Hz, EN 12900 rating conditions
R22

Cond. temp. in °C (tc)	Evaporating temperature in °C (to)								
	-25	-20	-15	-10	-5	0	5	10	15

Cooling capacity in W

30	4 151	5 704	7 573	9 791	12 392	15 408	18 872	22 819	27 280
35	3 736	5 224	7 009	9 125	11 604	14 480	17 786	21 556	25 822
40	3 324	4 741	6 435	8 442	10 794	13 524	16 666	20 252	24 316
45	2 923	4 261	5 860	7 751	9 970	12 547	15 518	18 915	22 771
50	-	3 793	5 289	7 059	9 138	11 557	14 350	17 551	21 193
55	-	-	4 731	6 374	8 306	10 560	13 170	16 169	19 590
60	-	-	-	5 701	7 481	9 564	11 985	14 776	17 970
65	-	-	-	-	6 671	8 577	10 802	13 378	16 339

Power input in W

30	2 297	2 598	2 861	3 087	3 277	3 432	3 553	3 642	3 699
35	2 356	2 704	3 012	3 282	3 516	3 713	3 875	4 004	4 100
40	2 391	2 791	3 150	3 469	3 751	3 995	4 204	4 377	4 517
45	2 397	2 852	3 267	3 641	3 976	4 272	4 532	4 755	4 944
50	-	2 882	3 357	3 790	4 183	4 537	4 852	5 131	5 374
55	-	-	3 412	3 910	4 366	4 782	5 158	5 497	5 799
60	-	-	-	3 993	4 517	5 000	5 443	5 846	6 212
65	-	-	-	-	4 630	5 185	5 699	6 172	6 606

Current consumption in A

30	5.52	5.84	6.14	6.42	6.67	6.89	7.07	7.20	7.28
35	5.60	5.95	6.30	6.62	6.91	7.16	7.38	7.55	7.67
40	5.64	6.05	6.45	6.83	7.17	7.48	7.75	7.97	8.13
45	5.63	6.12	6.59	7.03	7.45	7.82	8.16	8.44	8.67
50	-	6.12	6.68	7.21	7.71	8.17	8.58	8.95	9.25
55	-	-	6.71	7.34	7.94	8.49	9.00	9.46	9.86
60	-	-	-	7.40	8.11	8.78	9.40	9.97	10.48
65	-	-	-	-	8.22	9.01	9.76	10.45	11.08

Mass flow in kg/h

30	90	122	161	205	256	315	381	456	540
35	84	117	154	198	249	307	373	447	530
40	78	110	148	191	241	298	363	436	518
45	72	104	140	183	232	288	352	424	505
50	-	97	133	175	223	278	340	411	491
55	-	-	125	166	213	266	328	397	475
60	-	-	-	156	202	254	314	382	458
65	-	-	-	-	191	241	299	365	439

Coefficient of performance (C.O.P.)

30	1.81	2.20	2.65	3.17	3.78	4.49	5.31	6.27	7.38
35	1.59	1.93	2.33	2.78	3.30	3.90	4.59	5.38	6.30
40	1.39	1.70	2.04	2.43	2.88	3.39	3.96	4.63	5.38
45	1.22	1.49	1.79	2.13	2.51	2.94	3.42	3.98	4.61
50	-	1.32	1.58	1.86	2.18	2.55	2.96	3.42	3.94
55	-	-	1.39	1.63	1.90	2.21	2.55	2.94	3.38
60	-	-	-	1.43	1.66	1.91	2.20	2.53	2.89
65	-	-	-	-	1.44	1.65	1.90	2.17	2.47

Nominal performance at to = 5 °C, tc = 50 °C

Cooling capacity	14 350	W
Power input	4 852	W
Current consumption	8.58	A
Mass flow	340	kg/h
C.O.P.	2.96	

Pressure switch settings

Maximum HP switch setting	27.7	bar(g)
Minimum LP switch setting	0.2	bar(g)
LP pump down setting	0.9	bar(g)

Sound power data

Sound power level	0	dB(A)
With acoustic hood	0	dB(A)

to: Evaporating temperature at dew point

tc: Condensing temperature at dew point

Rating conditions : Superheat = 10 K , Subcooling = 0 K

All performance data +/- 5%

Danfoss can accept no responsibility for possible errors in catalogues, brochures and other printed material. Danfoss reserves the right to alter its products without notice.
This also applies to products already on order provided that such alternations can be made without subsequential changes being necessary in specifications already agreed.
All trademarks in this material are property of the respective companies. Danfoss, the Danfoss logotype and Maneurop are trademarks of Danfoss A/S. All rights reserved.

Performance data at 50 Hz, ARI rating conditions
R22

Cond. temp. in °C (tc)	Evaporating temperature in °C (to)								
	-25	-20	-15	-10	-5	0	5	10	15

Cooling capacity in W

30	4 408	6 052	8 029	10 372	13 118	16 299	19 951	24 107	28 802
35	3 982	5 563	7 457	9 700	12 326	15 369	18 864	22 846	27 349
40	3 557	5 067	6 872	9 006	11 506	14 404	17 735	21 535	25 838
45	3 143	4 576	6 286	8 308	10 675	13 423	16 586	20 199	24 297
50	-	4 094	5 702	7 602	9 829	12 419	15 405	18 824	22 710
55	-	-	5 130	6 902	8 984	11 409	14 214	17 433	21 100
60	-	-	-	6 219	8 149	10 405	13 023	16 036	19 482
65	-	-	-	-	7 324	9 403	11 825	14 626	17 841

Power input in W

30	2 297	2 598	2 861	3 087	3 277	3 432	3 553	3 642	3 699
35	2 356	2 704	3 012	3 282	3 516	3 713	3 875	4 004	4 100
40	2 391	2 791	3 150	3 469	3 751	3 995	4 204	4 377	4 517
45	2 397	2 852	3 267	3 641	3 976	4 272	4 532	4 755	4 944
50	-	2 882	3 357	3 790	4 183	4 537	4 852	5 131	5 374
55	-	-	3 412	3 910	4 366	4 782	5 158	5 497	5 799
60	-	-	-	3 993	4 517	5 000	5 443	5 846	6 212
65	-	-	-	-	4 630	5 185	5 699	6 172	6 606

Current consumption in A

30	5.52	5.84	6.14	6.42	6.67	6.89	7.07	7.20	7.28
35	5.60	5.95	6.30	6.62	6.91	7.16	7.38	7.55	7.67
40	5.64	6.05	6.45	6.83	7.17	7.48	7.75	7.97	8.13
45	5.63	6.12	6.59	7.03	7.45	7.82	8.16	8.44	8.67
50	-	6.12	6.68	7.21	7.71	8.17	8.58	8.95	9.25
55	-	-	6.71	7.34	7.94	8.49	9.00	9.46	9.86
60	-	-	-	7.40	8.11	8.78	9.40	9.97	10.48
65	-	-	-	-	8.22	9.01	9.76	10.45	11.08

Mass flow in kg/h

30	89	122	160	204	255	313	379	453	537
35	84	116	154	197	248	305	371	444	527
40	78	110	147	190	240	297	361	434	515
45	72	103	140	182	231	287	350	422	502
50	-	96	132	174	222	276	339	409	488
55	-	-	124	165	211	265	326	395	472
60	-	-	-	155	201	253	312	379	455
65	-	-	-	-	190	240	298	363	437

Coefficient of performance (C.O.P.)

30	1.92	2.33	2.81	3.36	4.00	4.75	5.61	6.62	7.79
35	1.69	2.06	2.48	2.96	3.51	4.14	4.87	5.71	6.67
40	1.49	1.82	2.18	2.60	3.07	3.61	4.22	4.92	5.72
45	1.31	1.60	1.92	2.28	2.69	3.14	3.66	4.25	4.91
50	-	1.42	1.70	2.01	2.35	2.74	3.17	3.67	4.23
55	-	-	1.50	1.77	2.06	2.39	2.76	3.17	3.64
60	-	-	-	1.56	1.80	2.08	2.39	2.74	3.14
65	-	-	-	-	1.58	1.81	2.08	2.37	2.70

Nominal performance at to = 7.2 °C, tc = 54.4 °C

Cooling capacity	15 731	W
Power input	5 273	W
Current consumption	9.16	A
Mass flow	357	kg/h
C.O.P.	2.98	

Pressure switch settings

Maximum HP switch setting	27.7	bar(g)
Minimum LP switch setting	0.2	bar(g)
LP pump down setting	0.9	bar(g)

Sound power data

Sound power level	0	dB(A)
With acoustic hood	0	dB(A)

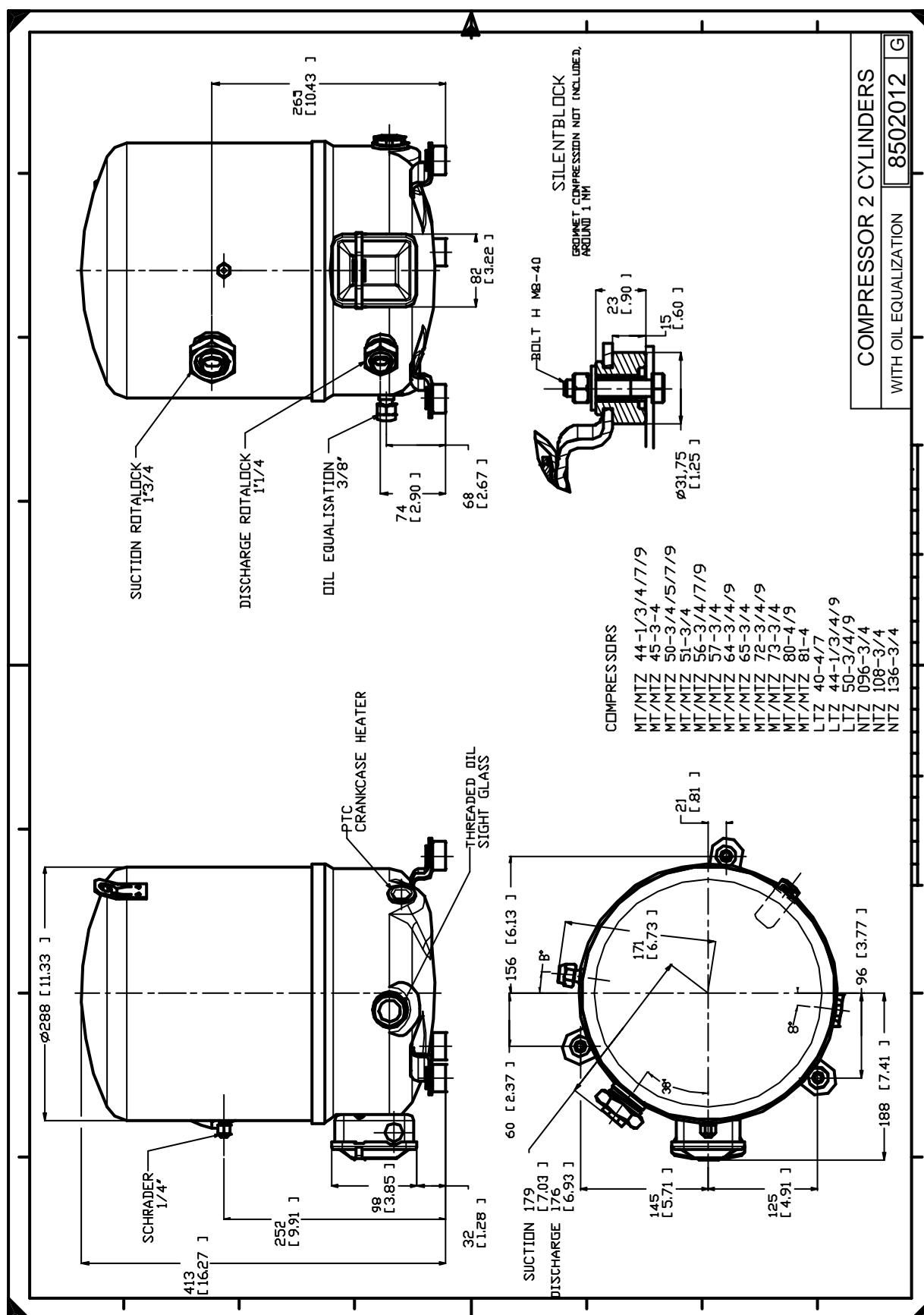
to: Evaporating temperature at dew point

tc: Condensing temperature at dew point

Rating conditions : Superheat = 11.1 K , Subcooling = 8.3 K

All performance data +/- 5%

Danfoss can accept no responsibility for possible errors in catalogues, brochures and other printed material. Danfoss reserves the right to alter its products without notice. This also applies to products already on order provided that such alternations can be made without subsequent changes being necessary in specifications already agreed. All trademarks in this material are property of the respective companies. Danfoss, the Danfoss logotype and Maneurop are trademarks of Danfoss A/S. All rights reserved.



Danfoss can accept no responsibility for possible errors in catalogues, brochures and other printed material. Danfoss reserves the right to alter its products without notice. This also applies to products already on order provided that such alterations can be made without consequential changes being necessary in specifications already agreed. All trademarks in this material are property of the respective companies. Danfoss, the Danfoss logotype and Maneurop are trademarks of Danfoss A/S. All rights reserved.