

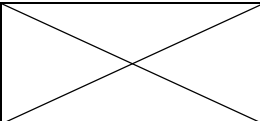
20. DEFROST OPERATION CONTROL

(1). CONDITION OF STARTING THE DEFROST OPERATION

The defrost operation starts when the outdoor heat exchanger temperature sensor detects the temperature lower than the values shown in Table 13.

(Table 13 : Condition of starting Defrost Operation)

1 ST time defrosting after starting operation		Compressor operating time			
		Less than 20 minutes	20 to 60 minutes	60 minutes to 4 hours	After 4 hours
	AWYZ14LBC	Does not operate	-9°C	-5°C	-3°C
	AWYZ18LBC		-9°C	-5°C	-3°C

Defrosting after 2 nd time upon starting operation		Compressor operating time			
		Less than 35 minutes	35 minutes to 4 hours		After 4 hours
	AWYZ14LBC	Does not operate	-6°C		-3°C
	AWYZ18LBC		-6°C		-3°C

(2). CONDITION OF THE DEFROST OPERATION COMPLETION

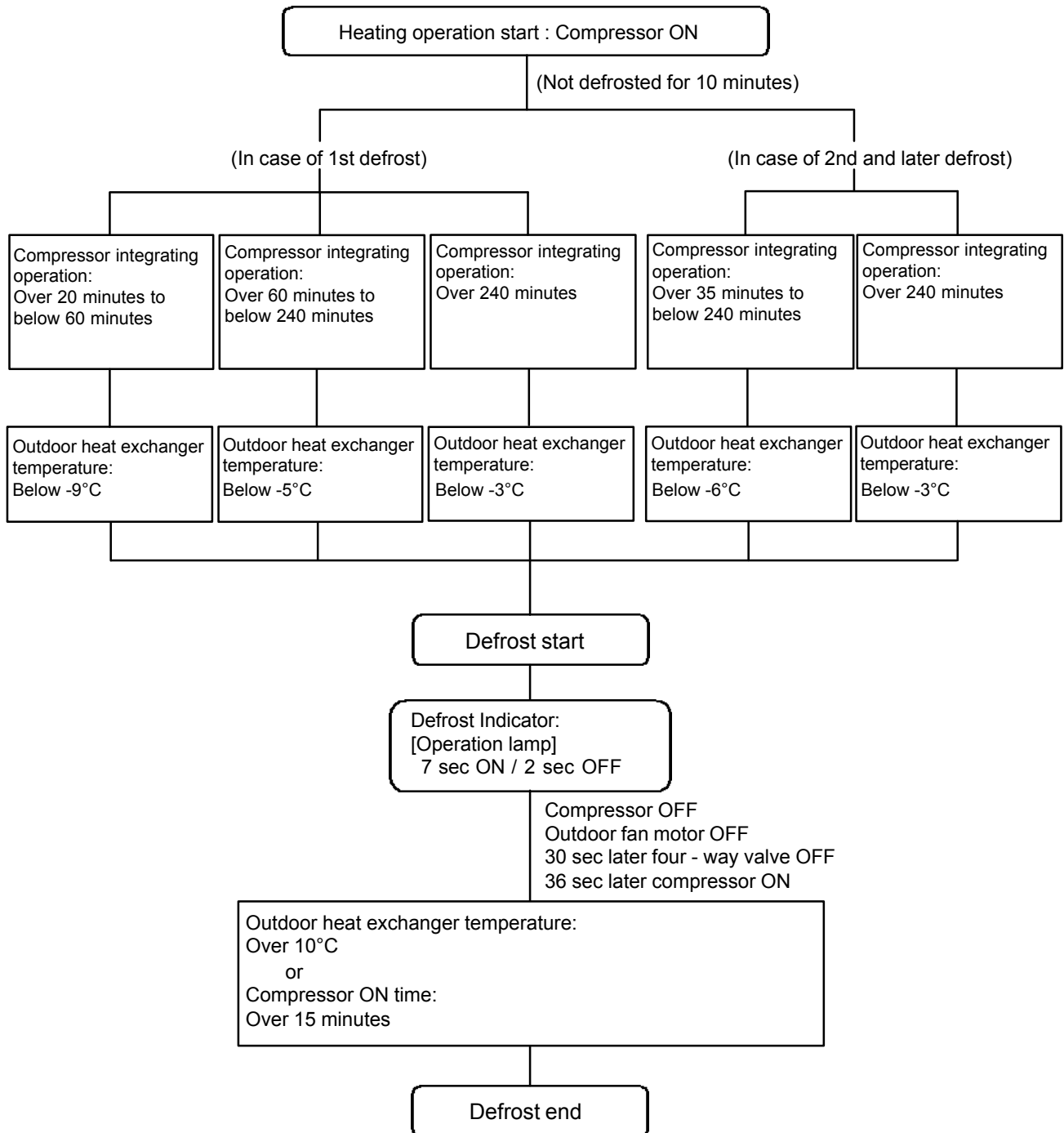
Defrost operation is released when the conditions become as shown in Table 14.

(Table 14 : Defrost Release Condition)

	Release Condition
AWYZ14/18LBC	Outdoor heat exchanger temperature sensor value is higher than 10°C or Compressor operation time has passed 15 minutes.

Defrost Flow Chart

The defrosting shall proceed by the integrating operation time and outdoor heat exchanger temperature as follows.



21. OFF DEFROST OPEARTION CONTROL

When operation stops in the [Heating operation] mode, if frost is adhered to the outdoor unit heat exchanger, the defrost operation will proceed automatically. In this time, if indoor unit operation lamp flashes slowly (7 sec ON / 2 sec OFF), the outdoor unit will allow the heat exchanger to defrost, and then stop.

(1). OFF DEFROST OPERATION CONDITION

In heating operation, the outdoor heat exchanger temperature is less than -4°C , and compressor operation integrating time lasts for more than 30 minutes.

(2). OFF DEFROST END CONDITION

	Release Condition
AWYZ14/18LBC	Outdoor heat exchanger temperature sensor value is higher than 10°C or Compressor operation time has passed 15 minutes.

OFF Defrost Flow Chart

