

OUTDOOR UNIT

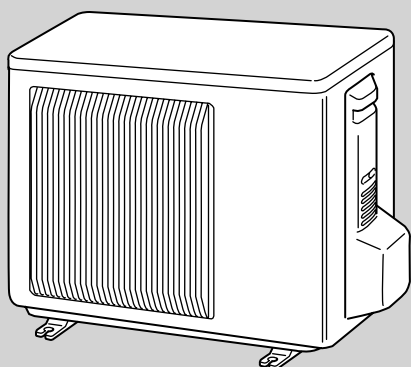
PARTS CATALOG

No. OBB624

Models

MUZ-FH25VE - E1

MUZ-FH35VE - E1



CONTENTS

- 1. RoHS PARTS LIST..... 2
- 2. OPTIONAL PARTS..... BACK COVER

SERVICE MANUAL (OBH624)

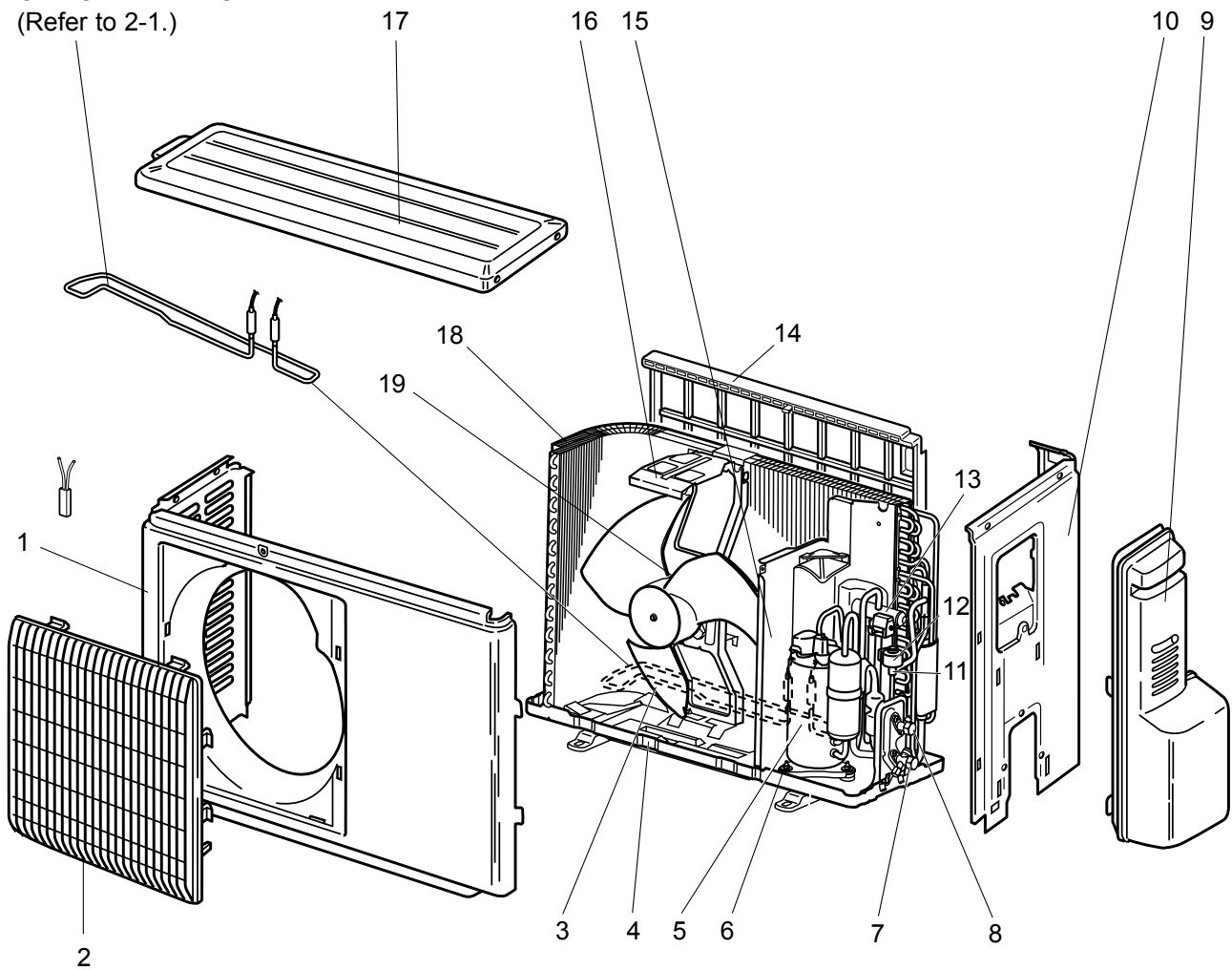
NOTE:
RoHS compliant products have <G> mark on the spec name plate.



MUZ-FH25VE MUZ-FH35VE

1-1. OUTDOOR UNIT STRUCTURAL PARTS AND FUNCTIONAL PARTS

OPTIONAL PARTS
(Refer to 2-1.)



RoHS PARTS LIST

1-1. OUTDOOR UNIT STRUCTURAL PARTS AND FUNCTIONAL PARTS

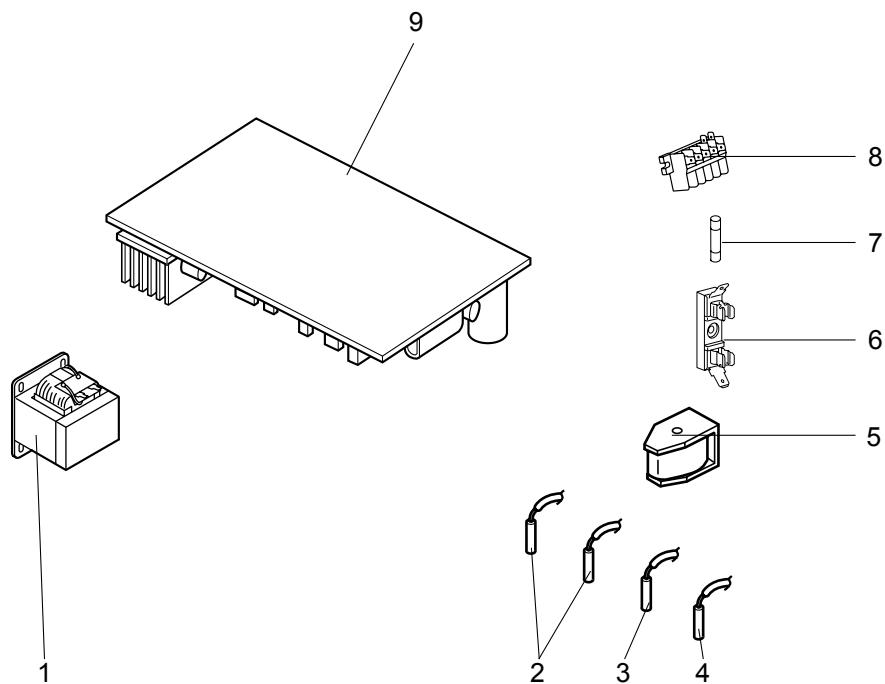
Part numbers that are circled are not shown in the illustration.

| No. | RoHS | Part No. | Part Name | Symbol in Wiring Diagram | Q'ty/unit | | Remarks |
|-----|------|-------------|------------------------|--------------------------|-----------|----------|---------------|
| | | | | | MUZ-FH25 | MUZ-FH35 | |
| | | | | | VE- [E1] | VE- [E1] | |
| 1 | G | E12 927 232 | CABINET | | 1 | 1 | |
| 2 | G | E12 927 521 | GRILLE | | 1 | 1 | |
| 3 | G | E12 927 501 | PROPELLER | | 1 | 1 | |
| 4 | G | E12 D69 290 | BASE | | 1 | 1 | |
| 5 | G | E12 J47 900 | COMPRESSOR | MC | 1 | 1 | SNB140FRUMT |
| 6 | G | E12 C34 506 | COMPRESSOR RUBBER SET | | 3 | 3 | 3 RUBBERS/SET |
| 7 | G | E12 927 661 | STOP VALVE (GAS) | | 1 | 1 | ø9.52 |
| 8 | G | E12 927 662 | STOP VALVE (LIQUID) | | 1 | 1 | ø6.35 |
| 9 | G | E12 927 245 | SERVICE PANEL | | 1 | 1 | |
| 10 | G | E12 C37 233 | BACK PANEL | | 1 | 1 | |
| 11 | G | E12 838 640 | EXPANSION VALVE | | 1 | 1 | |
| 12 | G | E12 G10 493 | EXPANSION VALVE COIL | LEV | 1 | 1 | |
| 13 | G | E12 J44 961 | 4-WAY VALVE | | 1 | 1 | |
| 14 | G | E12 929 523 | CONDENSER NET | | 1 | 1 | |
| 15 | G | E12 G11 293 | SEPARATOR | | 1 | 1 | |
| 16 | G | E12 929 515 | MOTOR SUPPORT | | 1 | 1 | |
| 17 | G | E12 927 297 | TOP PANEL | | 1 | 1 | |
| 18 | G | E12 J47 630 | OUTDOOR HEAT EXCHANGER | | 1 | 1 | |
| 19 | G | E12 A47 301 | OUTDOOR FAN MOTOR | MF | 1 | 1 | RC0J50-□□ |
| ⑳ | G | E12 J47 936 | CAPILLARY TUBE | | 1 | 1 | ø4.0×ø2.4×240 |
| ㉑ | G | E12 F35 936 | CAPILLARY TUBE | | 4 | 4 | ø3.0×ø2.0×210 |
| ㉒ | G | E12 838 704 | DRAIN SOCKET | | 1 | 1 | |

RoHS PARTS LIST

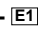

MUZ-FH25VE MUZ-FH35VE

1-2. OUTDOOR UNIT ELECTRICAL PARTS



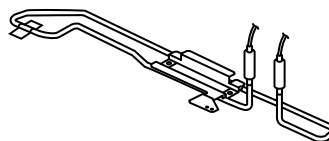
RoHS PARTS LIST

1-2. OUTDOOR UNIT ELECTRICAL PARTS

| No. | RoHS | Part No. | Part Name | Symbol in Wiring Diagram | Q'ty/unit | | Remarks |
|-----|------|-------------|---|--------------------------|--|---|------------------------------|
| | | | | | MUZ-FH25 | MUZ-FH35 | |
| | | | | | VE-  | VE-  | |
| 1 | G | E12 G11 337 | REACTOR | L61 | 1 | 1 | |
| 2 | G | E12 C34 306 | THERMISTOR SET | RT61, RT62 | 1 | 1 | DEFROST, DISCHARGE |
| 3 | G | E12 G10 309 | AMBIENT TEMPERATURE THERMISTOR | RT65 | 1 | 1 | |
| 4 | G | E12 C34 307 | OUTDOOR HEAT EXCHANGER TEMPERATURE THERMISTOR | RT68 | 1 | 1 | |
| 5 | G | E12 J47 490 | R.V. COIL | 21S4 | 1 | 1 | |
| 6 | G | E12 735 241 | FUSE HOLDER | | 1 | 1 | |
| 7 | G | E12 735 382 | FUSE | F61 | 1 | 1 | T20AL250V |
| 8 | G | E12 G16 374 | TERMINAL BLOCK | TB | 1 | 1 | 5 P |
| 9 | G | E12 J47 451 | INVERTER P.C. BOARD | | 1 | | Including heat sink and RT64 |
| | G | E12 J48 451 | | | | 1 | |

2-1. DEFROST HEATER

| Model | Parts No. |
|--------------------------|-------------|
| MUZ-FH25VE MUZ-FH35VE | MAC-643BH-E |



Components

| | | | | | |
|------------------|---|-----------------------|---|------------------|---|
| ① Defrost heater | 1 | ④ Cable tie | 1 | ⑦ Wiring diagram | 1 |
| ② Aluminum tape | 1 | ⑤ Self drilling screw | 2 | ⑧ Spec label | 1 |
| ③ Heater support | 1 | ⑥ Insulation | 1 | | |

NOTE:

- Attaching the Freeze-prevention heater "MAC-643BH-E Anti-Freeze Heater" (for drain pan) to MUZ-FH25/35VE requires installation of the INVERTER P.C. BOARD for MUZ-FH25/35VEHZ.
Order the INVERTER P.C. BOARD for MUZ-FH25/35VEHZ as needed.
- Refer to the installation manual for the installation.

MITSUBISHI ELECTRIC CORPORATION

HEAD OFFICE: TOKYO BLDG., 2-7-3, MARUNOUCHI, CHIYODA-KU, TOKYO 100-8310, JAPAN