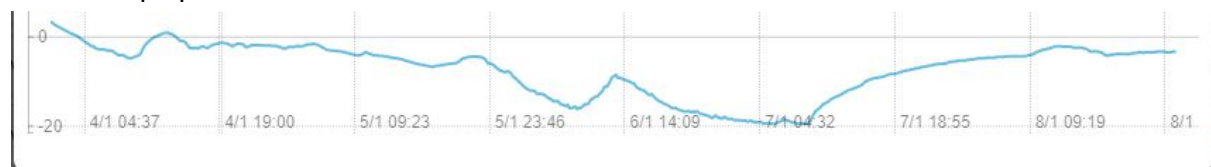


Vp hus 220104-08,

energi

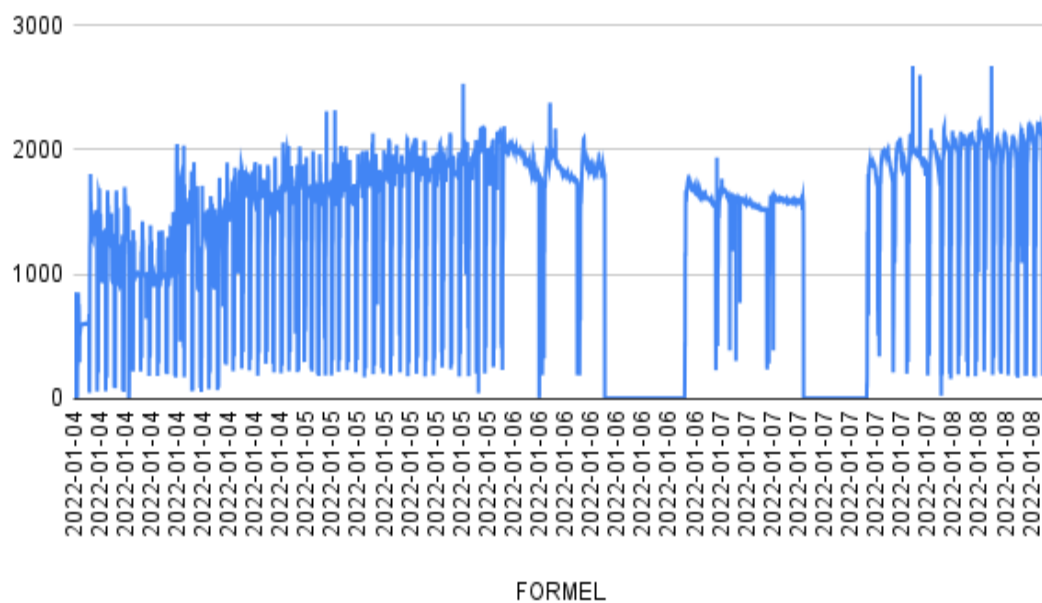


Utblåstemp vp hus 220104-08

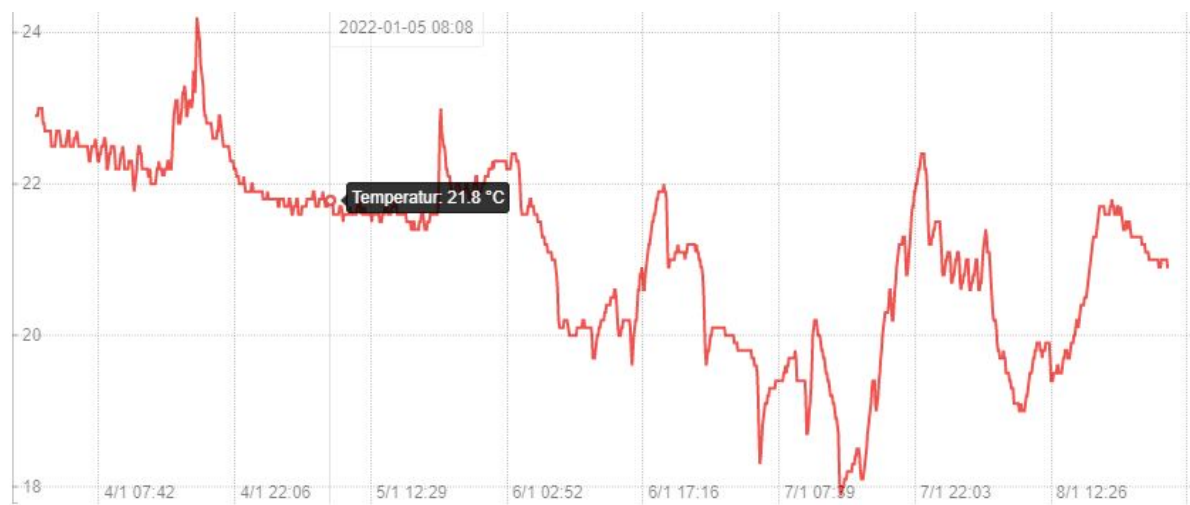


Utetemp 220104-08

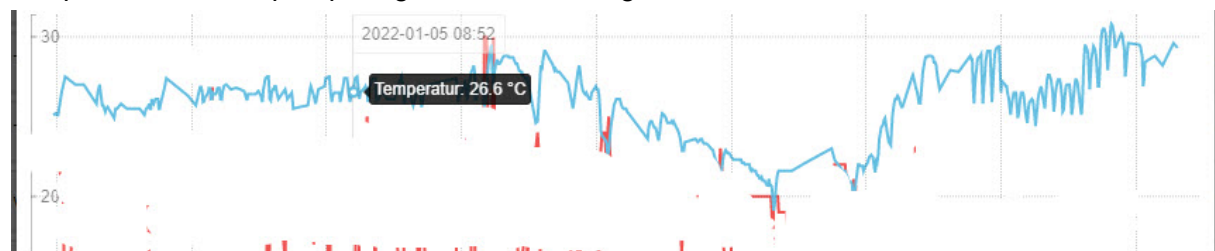
mot FORMEL



Energiförbr vp hus 220104-08 kl 12.30, 1600 W 0106-07



Temp i hall 3 m från pump. Legat mellan 18-24 grader.



Vp hus insugtemp, sensor ovanpå pump, 220104-08